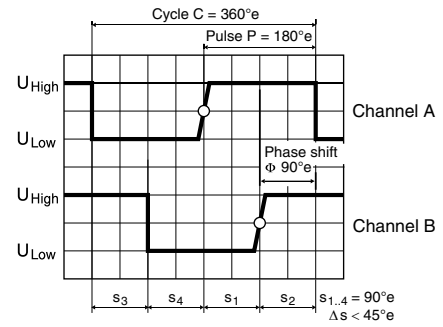
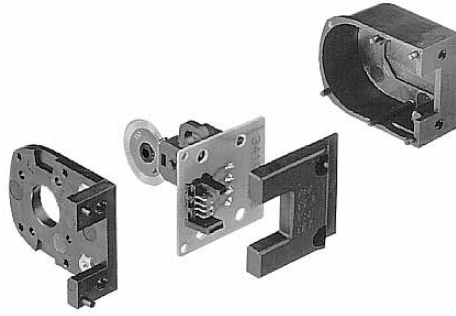
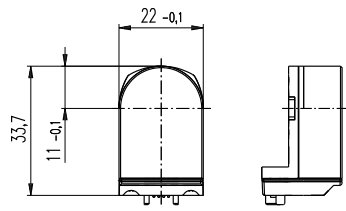


Encoder Enc 22 100 CPT, 2 Channels



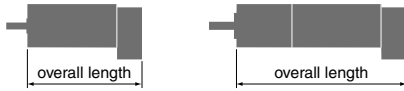
Direction of rotation cw (definition cw p. 60)

- Stock program
- Standard program
- Special program (on request)

Part Numbers

103935	110520	110521
--------	--------	--------

Type	103935	110520	110521
Counts per turn	100	100	100
Number of channels	2	2	2
Max. operating frequency (kHz)	20	20	20
Max. speed (rpm)	12000	12000	12000
Shaft diameter (mm)	3	2	3



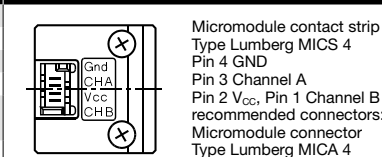
maxon Modular System

+ Motor	Page	+ Gearhead	Page	Overall length [mm] / ● see Gearhead
RE 25	125/127			68.6
RE 25	125/127	GP 26, 0.75 - 2.0 Nm	332	●
RE 25	125/127	GP 32, 0.75 - 4.5 Nm	334	●
RE 25	125/127	GP 32, 0.75 - 4.5 Nm	335	●
RE 25	125/127	GP 32, 1.0 - 6.0 Nm	338	●
RE 25	125/127	GP 32 S	366-368	●
A-max 19, 1.5 W	144			43.3
A-max 19, 1.5 W	144	GP 19, 0.1 - 0.3 Nm	322	●
A-max 19, 1.5 W	144	GP 22, 0.1 - 2.0 Nm	325/327	●
A-max 19, 1.5 W	144	GS 24, 0.1 Nm	331	●
A-max 19, 1.5 W	146	GP 22 S	364/365	●
A-max 19, 2.5 W	146			45.9
A-max 19, 2.5 W	146	GP 19, 0.1 - 0.3 Nm	322	●
A-max 19, 2.5 W	146	GP 22, 0.1 - 2.0 Nm	325/327	●
A-max 19, 2.5 W	146	GS 24, 0.1 Nm	331	●
A-max 19, 2.5 W	146	GP 22 S	364/365	●
A-max 22	148/150			46.3
A-max 22	148/150	GP 22, 0.1 - 0.3 Nm	323	●
A-max 22	148/150	GP 22, 0.2 - 0.6 Nm	324	●
A-max 22	148/150	GP 22, 0.1 - 2.0 Nm	323-327	●
A-max 22	148/150	GS 24, 0.1 Nm	331	●
A-max 22	148/150	GP 22 S	364/365	●
A-max 26	152-158			59.1
A-max 26	152-158	GP 26, 0.75 - 4.5 Nm	332	●
A-max 26	152-158	GS 30, 0.07 - 0.2 Nm	333	●
A-max 26	152-158	GP 32, 0.75 - 4.5 Nm	334	●
A-max 26	152-158	GP 32, 0.75 - 4.5 Nm	335	●
A-max 26	152-158	GP 32, 1.0 - 6.0 Nm	339	●
A-max 26	152-158	GS 38, 0.1 - 0.6 Nm	344	●
A-max 26	152-158	GP 32 S	366-368	●

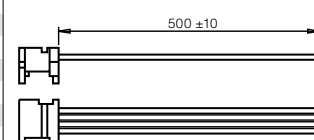
Technical Data

Supply voltage V_{CC}	$5 V \pm 10\%$
Typical current draw	18 mA
Output signal	TTL compatible
Phase shift Φ	$90^\circ \pm 45^\circ$
Signal rise time (typically, at $C_L = 25 \text{ pF}$, $R_L = 11 \text{ k}\Omega$, 25°C)	200 ns
Signal fall time (typically, at $C_L = 25 \text{ pF}$, $R_L = 11 \text{ k}\Omega$, 25°C)	50 ns
Operating temperature range	$-20 \dots +85^\circ\text{C}$
Moment of inertia of code wheel	$\leq 0.05 \text{ gcm}^2$
Output current per channel	min. -1 mA, max. 5 mA

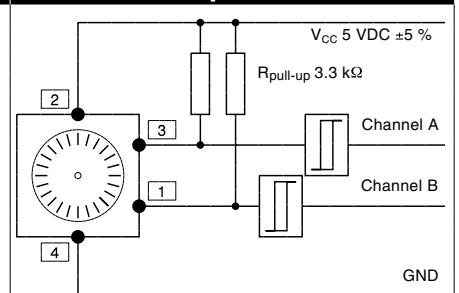
Pin Allocation



Order number for connector with cable: 3419.506



Connection example



Ambient temperature range $\theta_U = 22 - 25^\circ\text{C}$