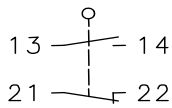


Metal bodied limit switch Series GC

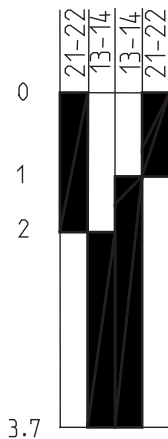
Description **GC-SU1 RIW 90GR HITZE**

Article number **6121167462**

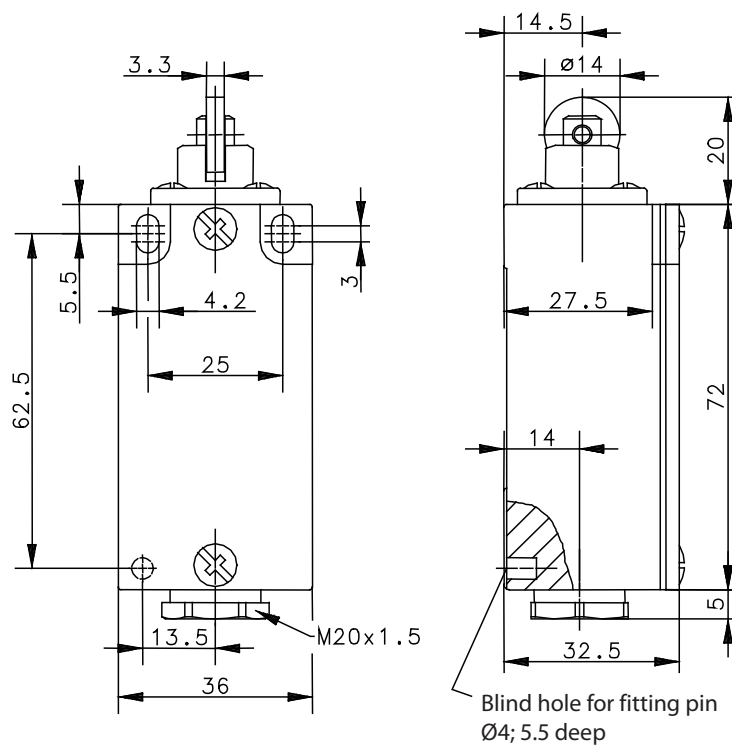
Operating symbol



Operating diagram



On
 Off
 Tolerance:
 Operating Point $\pm 0,25$ mm;
 Operating force ± 10 %



Electrical Data

| | | |
|---------------------------------|-----------|------------------------------|
| Rated insulation voltage | U_i | 250 V AC |
| Conv. thermal current | I_{the} | 6 A |
| Rated operational voltage | U_e | 240 V |
| Utilization category | | AC-15, U_e/I_e 240 V / 3 A |
| Short-circuit protective device | | Fuse 2 A gG |
| Protection class | | I |

| Mechanical data | |
|--------------------------|---|
| Enclosure | Die-cast aluminium |
| Cover | Sheet aluminium |
| Actuator | St-roller |
| Ambient air temperature | -30 °C ... +100 °C |
| Contact type | 1 NC, 1 NO |
| Mechanical life | 10 x 10 ⁶ operating cycles |
| Switching frequency | ≤ 100 / min. |
| Assembly | 2 x M4 |
| Connection | 4 screw connections (M3) |
| Conductor cross-sections | Solid: 0,5 ... 1,5 mm ² or Litz wire with ferrules: 0,5 ... 1,5 mm ² |
| Cable entrance | 1 x cable gland (M20x1.5) (clamp-range 5,5 – 6,1mm) |
| Weight | ≈ 0,16 kg |
| Installation position | operator definable |
| Protection type | IP65 |

| Actuation |
|--|
| By loosening the 4 screws the actuation assembly can be rotated in 90 degree increments such that 4 actuation directions are possible. The actuation assembly is to be again fastened to the housing using the 4 screws. |

| Standards |
|--|
| VDE 0660 T100, DIN EN 60947-1, IEC 60947-1 |
| VDE 0660 T200, DIN EN 60947-5-1, IEC 60947-5-1 |

| EU Conformity |
|--|
| acc. to directive 2014/35/EU (Low-Voltage-Directive) |

| Approvals |
|-----------|
| CCC |

| Notes |
|--|
| The specified protection classification (IP code) applies only when the cover is closed and the appropriate cable is used, in accordance with the clamping range of the above mentioned cable gland. |