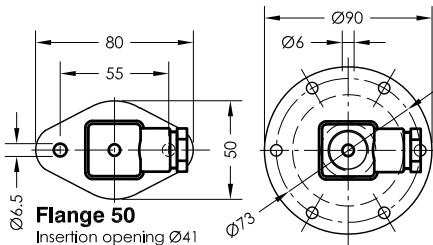
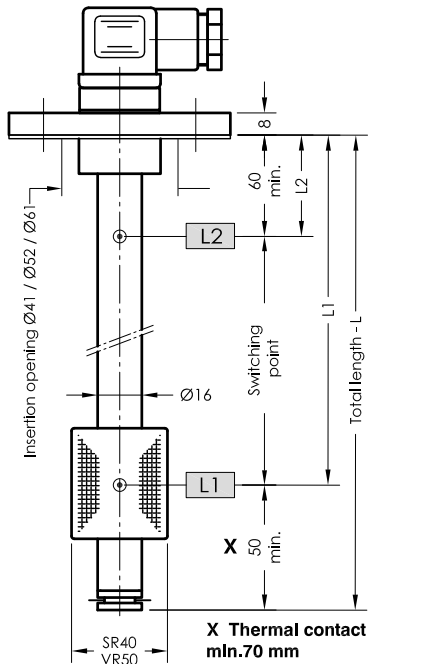


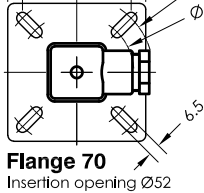
NR 50 / 70 / 85

Level regulator for tank insert

serial No. Date
IN-GB- 102 10/18

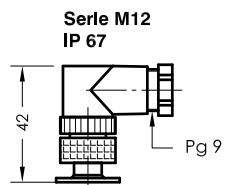
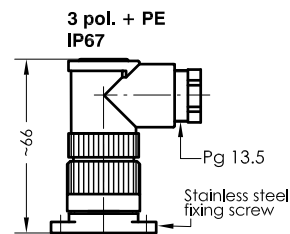
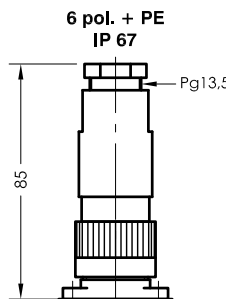
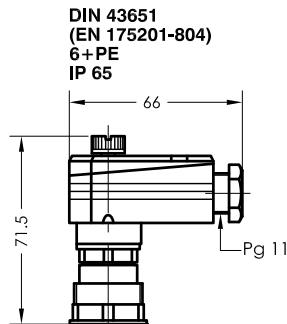
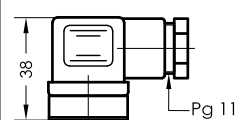


Flange 85
according to
DIN24557 part 2
Insertion opening Ø61



Flange 70
Insertion opening Ø52
3 + PE
EN 175301-803
(DIN 43650)
IP 65

Connector variants



Order code

Specimen order

NR 50 -SR40-L370-OK-L1/300/S-T70Ö-MS-M12

Connection

50
70
85

Float type

SR 40
VR50

Total length-L switching tube (mm)

Standard length

L=250
L=370
L=500

Level contact type

OK = Cableless contacts (max. 500mm)

01 = fixed, plain 02 = fixed, changeover
03 = adjustable, plain
04 = adjustable, changeover
(max. 2 functions)

Pt100

Thermal contact

T100
T400
T500
T600 (S)
T700 (S)
T800 (S)
T900
(Ö preferred)

Plug socket connector
3+PE 6 pol.+PE
DIN 43651
M12

Execution

MS = Brass
VA = Switching tube

Switching point L1-L2/ mm from sealing edge

Ö = break

S = make

Function with increasing level

Function with increasing level

Technical data

Description

The level regulator type NR 50 / 70 / 85 for tank insert is a solenoid switch operating without contact with the function of monitoring and regulating liquid levels and temperatures. The switching tube contains bistable protective gas contacts. They may be fixed or alternatively mounted as an adjustable contact cartridge on a perforated strip. For fixed contacts, the contact intervals and their functions must be given. Plain contact cartridges can be subsequently adjusted for height. The function of make or break can then be altered by turning the cartridge through 180° degrees. The permanent magnet built into the float switches the contacts when the level changes. The switching difference (hysteresis) is 4 mm. For temperature monitoring and regulation, thermal elements such as Pt100 and thermal contacts can be additionally incorporated. The level controller is maintenance-free when nondeposit media are used. For inductive loads, a protective circuit must be provided (free-wheeling diode/RC element). The device must only be installed by specialists.

Max. viscosity 320mm²/S

Technical data

Switch tube	Brass / Stainless steel max.L = 1000mm
Mounting flange	Polyamide with flat seal / Stainless steel
Nominal pressure	1 bar max.
Temperature of medium	100°C max.
Float	Rigid PU, type SR 40 Stainless steel VR50
Level contacts	bistable make/break
Switching potential	Datasheet IN - GB - 003(004)
Thermoelements	Pt100, thermal contact
Number of functions	max. 4 adjustable
Mounting position	vertical ± 30°
*Thermal contact	Sheet TR-GB-507



GOLDAMMER
REGELUNGSTECHNIK GMBH

SCHÖLLERSHEIDER STR. 15 PHONE (49) 2104/12093
P.O.BOX 10 02 17 FAX (49) 2104/12028
D-40802 METTMANN www.Goldammer-Regelungstechnik.com