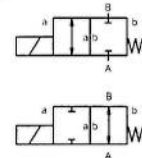


coaxial valve

type FK 65



2/2 way valve direct acting
 pressure range PN 0-16 bar
 orifice DN 65 mm
 connection flange
 function valve normally closed
 symbol NC
 valve normally open
 symbol NO



⚠ Above stated body materials refer to the valve port connections that get in contact with the media only!

design pressure balanced, with spring return
body materials ① aluminium ② steel, galvanized
 ③ ⑤
 ④ steel, nickel plated ⑥ stainless steel
valve seat synthetic resin on metal
seal materials NBR PTFE, FPM, EPDM

details needed

- orifice
- port
- function NC/NO
- operating pressure
- flow rate
- media
- media temperature
- ambient temperature
- nominal voltage

| | general specifications | options |
|-----------------------------|---|----------------------------|
| ports | FK flanges PN 16 | special flanges |
| function | NC | NO |
| pressure range | bar 0-16 | 0-16 bar upon request |
| Kv value | m ³ /h 45,0 | |
| vacuum | leak rate | < 10 ⁻⁶ mbar/h |
| pressure-vacuum | P ₁ ⇌ P ₂ | upon request |
| back pressure | P ₂ > P ₁ | available (max. 5 bar) |
| media | gaseous - liquid - highly viscous - gelatinous - contaminated | |
| abrasive media | | upon request |
| damping | opening | |
| | closing | upon request |
| flow direction | A ⇌ B as marked | b-directional (max. 5 bar) |
| switching cycles | 1/min 20 | |
| switching time | ms opening 600 closing 800 | |
| media temperature | °C DC: -20 to +80 | |
| | AC: -20 to +80 | |
| ambient temperature | °C DC: -20 to +80 | |
| | AC: -20 to +80 | |
| limit switches | | optional |
| manual override | | optional |
| approvals | | optional |
| mounting | | |
| weight | kg FK 35,0 | |
| additional equipment | | upon request |

⚠ The valves' technical design is based on media and application requirements. This can lead to deviations from the general specifications shown on the data sheet with regards to the design, sealing materials and characteristics.

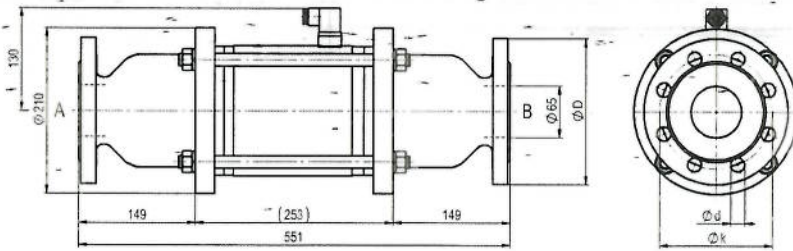
⚠ If order or application specifications are incomplete or imprecise there exists a risk of an incorrect technical design of the valve for the required application. As a consequence, the physical and / or chemical properties of the materials or seals used, may not be suitable for the intended application.

| | electrical specifications | options |
|--------------------------------------|---|------------------------------|
| nominal voltage | U _n DC 24 V | special voltage upon request |
| | U _n AC 230 V 40-60 Hz | special voltage upon request |
| actuation | DC direct-current magnet | |
| | AC direct-current magnet with integrated rectifier | |
| insulating rating | H 180°C | |
| protection | IP65 | |
| energized duty rating | ED 100% | |
| connection | plug acc. DIN EN 175301-803 form A, 4 positions x90° / wire diameter 6-8 mm | terminal box (max. 5 bar) |
| optional additional equipment | illuminated plug with varistor | |
| current consumption | N-coil DC 24 V 4,40 A | |
| | H-coil AC 230 V 40-60 Hz 0,65 A | |
| explosion proof | | optional |
| limit switches | | optional |

■ specifications not highlighted are standard

type FK 65

function:- NC
closed when not energized



| flanges PN | DIN | ØD | Øk | Ød |
|------------|-----------|-----|-----|----|
| 16 | EN 1092-1 | 185 | 145 | 18 |

type FK 65

function: NO
open when not energized

