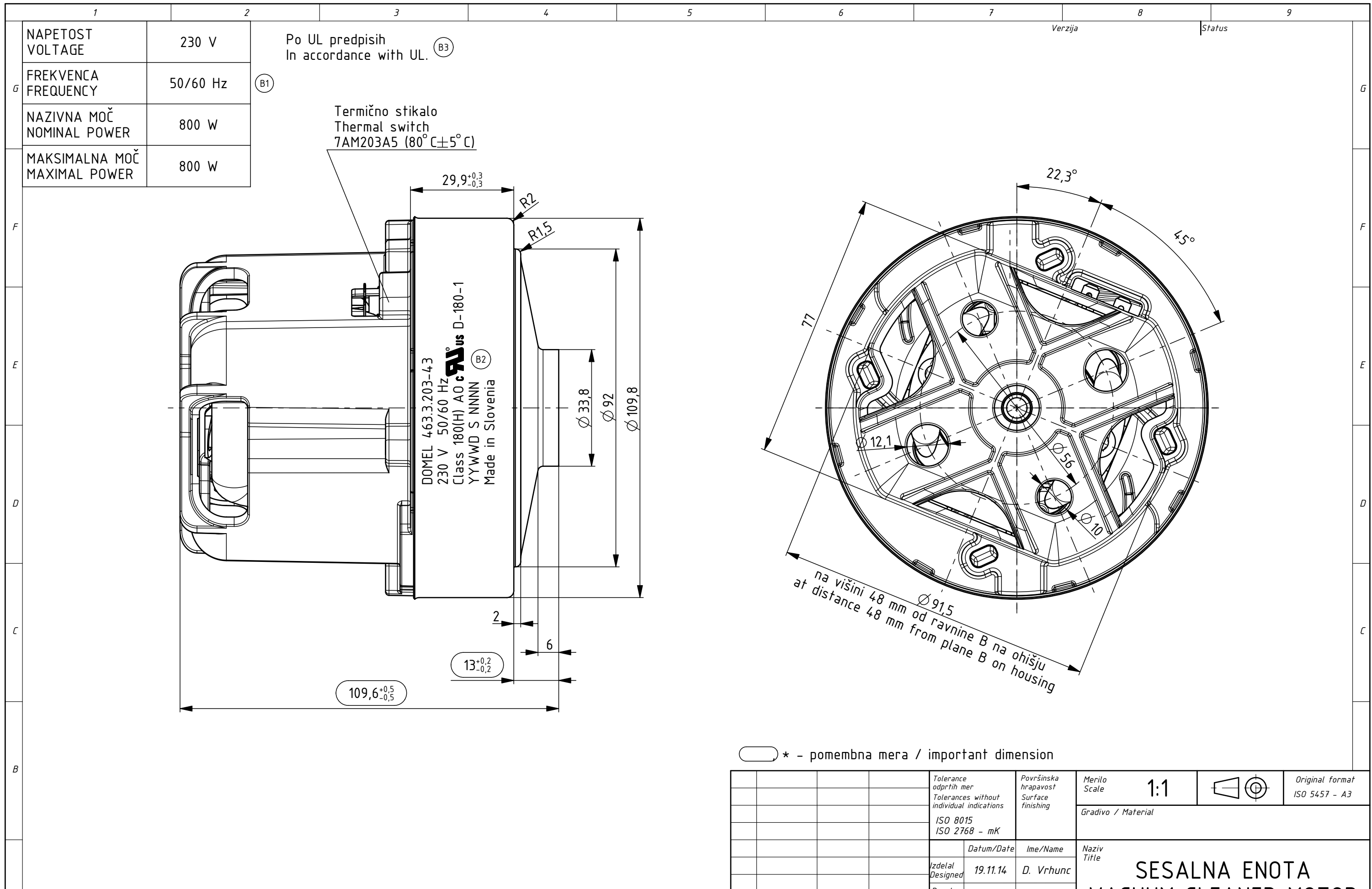


Izdelano s CAD/ProEngineer - ročno spreminjanje ni dovoljeno! Vsak prenos tretjim osebam ali uporaba v nedogovorjene namene ni dovoljena po zakonu o avtorskih pravicah. Made with CAD/ProEngineer - changing is not allowed! Any unauthorized copying of this drawing or unauthorized distribution of the information contained herein is prohibited.



OSNOVNE ZNAČILNOSTI		TYPICAL CHARACTERISTICS	
IZVEDBA	ENOSTOPENJSKA	FAN SYSTEM	SINGLE STAGE
ULEŽAJENJE	DVA KROGLIČNA LEŽAJA	BEARINGS	DUAL BALL
VRSTA PRETOKA	SKOZI MOTOR	DISCHARGE	THRU FLOW
SMER VRTENJA	DESNA	DIRECTION OF ROTATION	CW

○ \* - pomembna mera / important dimension

Tolerance odprtih mer Tolerances without individual indications ISO 8015 ISO 2768 - mK				Površinska hrapavost Surface finishing		Merilo Scale <b>1:1</b>		Original format ISO 5457 - A3	
Datum/Date				Ime/Name		Gradivo / Material			
Izdelal Designed 19.11.14				D. Vrhunc		Naziv Title <b>SESALNA ENOTA VACUUM CLEANER MOTOR</b>			
Pregl. Verified 02.11.15				J. Rihtaršič		Koda Code <b>463.3.203-43</b>			
Ozn. Mark Št. obvestila Nr. of notice				Datum Date		Ime Name		List Sheet 3+	
D. Vrhunc				19.11.14		D. Vrhunc		Stran Page 1	
DOMEL® Otoki 21, 4228 Železniki, Slovenija								4633203043_SESALNA_ENOTA	