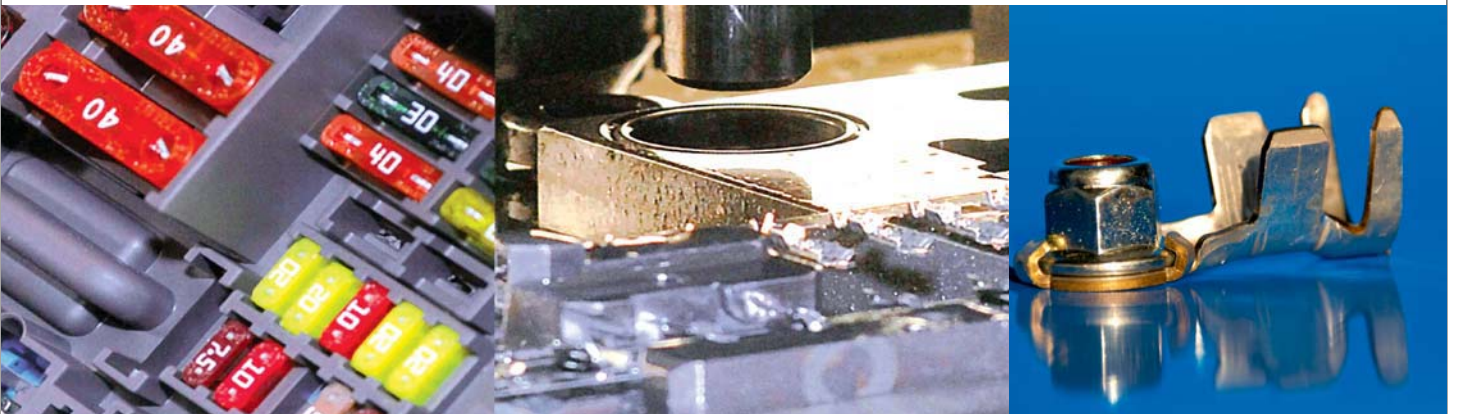


**Claw Terminals**

**Krallenkabelschuhe**



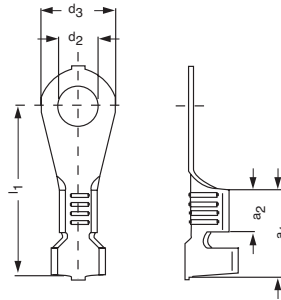
# Ring Terminals

DIN 46225 and similar types

# Krallenkabelschuhe

Ringform  
DIN 46225 und ähnliche Ausführungen

Type 1



Type	Wire cross section qmm	DIN standard	Nominal size	a1	a2	d2	d3	l1	Material thickness	Form E=single B=chain	Part number	Material	Surface	Terminal feed	Foot-note
1	0.5 -1.0	46225 Form A	A4-1	9.00	4.50	4.30	8.00	18.30	0.60	E	05203.123.011	CuZn	Sn		
										B	25203.123.009	CuZn	Sn	L	
										B	25203.123.011	CuZn	Sn		
										B	25203.212.179	CuSn	Sn		
B	25203.213.011	CuSn	Sn												
1	0.5 -1.0	46225 Form A	A5-1	9.00	4.50	5.30	9.50	17.50	0.60	E	05205.123.003	CuZn	Sn		
										B	25205.123.009	CuZn	Sn	L	
										B	25205.123.011	CuZn	Sn		
										B	25205.213.009	CuSn	Sn		
B	25205.213.011	CuSn	Sn												
1	0.5 -1.0			9.00	4.50	6.30	9.50	17.50	0.60	B	25165.123.011	CuZn	Sn	L	
1	0.5 -1.0	46225 Form A	A3-1	9.00	4.50	3.20	8.00	18.30	0.60	B	25201.123.009	CuZn		L	
											25201.123.011	CuZn	Sn		
1	0.5 -1.0	46225 Form A	A6-1	9.00	4.50	6.50	12.00	22.00	0.60	B	25207.123.011	CuZn	Sn	L	
										B	25207.123.322	CuZn	Sn		
										B	25207.212.179	CuSn	Sn		
										B	25207.213.004	CuSn	Sn		
										B	25207.213.011	CuSn	Sn		
										B	25207.213.320	CuSn	Sn		*1
B	25207.213.322	CuSn	Sn		*1										
Type	Nenn-quer-schnitt qmm	DIN	Nenn-größe	a1	a2	d2	d3	l1	Mat.-dicke	Form E=Einzel B=Band	Teile-Nr.	Werkstoff	Oberfläche	Verb.-vor-schub	Fuß-note

\*1 With intermediate layer paper

\*1 Mit Papierzwischenlage

Einzelkontakte auf Anfrage

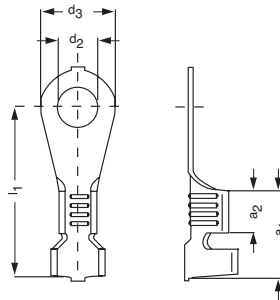
# Ring Terminals

DIN 46225 and similar types

# Krallenkabelschuhe

Ringform  
DIN 46225 und ähnliche Ausführungen

Type 1



Type	Wire cross section qmm	DIN standard	Nominal size	a1	a2	d2	d3	l1	Material thickness	Form E=single B=chain	Part number	Material	Surface	Terminal feed
1	0.5 - 1.0	46225 Form A	A8-1	9.00	4.50	8.40	14.00	21.00	0.60	E	05209.123.001	CuZn		
										B	25209.123.009	CuZn		L
										B	25209.123.011	CuZn	Sn	
										B	25209.212.179	CuSn	Sn	
										B	25209.213.011	CuSn	Sn	
1	1.5 - 2.5	46225 Form A	A4-2.5	9.00	4.50	4.30	8.00	18.30	0.60	E	05215.123.011	CuZn	Sn	
										B	25215.123.009	CuZn		L
										B	25215.123.011	CuZn	Sn	
										B	25215.212.179	CuSn	Sn	
										B	25215.213.004	CuSn		
B	25215.213.011	CuSn	Sn											
1	0.75 - 1.5			9.00	3.50	4.30	8.00	18.25	0.75	B	25086.123.011	CuZn	Sn	L
1	0.75 - 1.5			9.50	3.50	5.30	9.50	17.50	0.75	B	25087.123.009	CuZn		L
											25087.123.011	CuZn	Sn	
1	0.5 - 2.5			9.50	3.50	8.40	14.00	21.00	0.75	B	25089.123.011	CuZn	Sn	L
1	0.75 - 1.5	46225 Form A	A10-1	9.00	4.50	10.50	18.50	24.00	0.60	B	25211.123.009	CuZn		L
											25211.123.011	CuZn	Sn	
											25211.212.179	CuSn	Sn	
1	0.75 - 1.5	46225 Form A	A3-2.5	9.00	4.50	3.20	8.00	18.30	0.60	B	25213.123.011	CuZn	Sn	L
1	0.5 - 1.0			9.00	4.50	13.00	18.50	24.00	0.60	B	25226.123.009	CuZn		L
Typ	Nennquerschnitt qmm	DIN	Nenngröße	a1	a2	d2	d3	l1	Mat.-dicke	Form E=Einzel B=Band	Teile-Nr.	Werkstoff	Oberfläche	Verb.-vor-schub

Einzelkontakte auf Anfrage



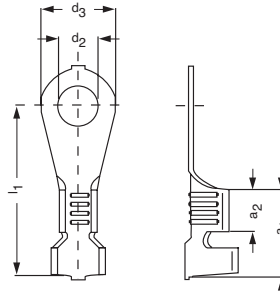
## Ring Terminals

DIN 46225 and similar types

## Krallenkabelschuhe

Ringform  
DIN 46225 und ähnliche Ausführungen

Type 1



Type	Wire cross section qmm	DIN standard	Nominal size	a1	a2	d2	d3	l1	Material thickness	Form E=single B=chain	Part number	Material	Surface	Terminal feed
1	1.5 -2.5	46225 Form A	A5-2.5	9.00	4.50	5.30	9.50	17.50	0.60	E	05217.123.011	CuZn	Sn	
										B	25217.123.009	CuZn		L
										B	25217.123.011	CuZn	Sn	
										B	25217.213.011	CuSn	Sn	
										B	25217.213.320	CuSn		
1	1.5 -2.5			9.00	4.50	6.50	12.00	22.00	0.60	E	05219.123.011	CuZn	Sn	
										B	25219.123.009	CuZn		L
										B	25219.123.011	CuZn	Sn	
										B	25219.123.322	CuZn	Sn	
										B	25219.212.179	CuSn	Sn	
										B	25219.213.004	CuSn		
										B	25219.213.011	CuSn	Sn	
										B	25219.213.320	CuSn		
B	25219.213.322	CuSn	Sn											
1	1.5 -2.5			9.00	4.50	8.40	14.00	21.00	0.60	E	05221.123.011	CuZn	Sn	
										B	25221.123.009	CuZn		L
										B	25221.123.011	CuZn	Sn	
										B	25221.212.179	CuSn	Sn	
										B	25221.213.011	CuSn	Sn	
1	1.5 - 2.5			9.00	4.50	6.30	9.50	17.50	0.60	B	25167.123.011	CuZn	Sn	L
										B	25167.123.141	CuZn	Ag	
Typ	Nenn-quer-schnitt qmm	DIN	Nenn-größe	a1	a2	d2	d3	l1	Mat.-dicke	Form E=Einzel B=Band	Teile-Nr.	Werkstoff	Oberfläche	Verb.-vor-schub

Einzelkontakte auf Anfrage

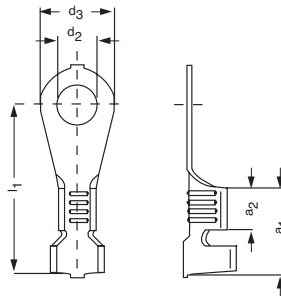
# Ring Terminals

DIN 46225 and similar types

# Krallenkabelschuhe

Ringform  
DIN 46225 und ähnliche Ausführungen

Type 1



Type	Wire cross section qmm	DIN standard	Nominal size	a1	a2	d2	d3	l1	Material thickness	Form E=single B=chain	Part number	Material	Surface	Terminal feed	Footnote
1	4.00 - 6.00	46225 Form A	A5-6	11.00	4.50	5.30	9.50	20.50	0.80	E	05231.123.011	CuZn	Sn		
										B	25231.123.011	CuZn	Sn	L	
										B	25231.212.004	CuSn	Sn		
										B	25231.212.011	CuSn	Sn		
										B	25231.213.011	CuSn	Sn		
1	1.5 - 2.5			9.00	4.50	10.50	18.50	24.00	0.60	B	25223.123.011	CuZn	Sn	L	
										B	25223.212.179	CuSn	Sn		
										B	25223.213.011	CuSn	Sn		
1	4.00 - 6.00	46225 Form A	A4-6	11.00	4.50	4.30	8.00	21.30	0.80	B	25229.123.011	CuZn	Sn	L	
										B	25229.212.179	CuSn	Sn		
1	4.00 - 6.00	46225 Form A	A6-6	11.00	4.50	6.50	12.00	25.00	0.80	B	25233.123.009	CuZn	Sn	L	*1
										B	25233.123.011	CuZn	Sn		
										B	25233.123.178	CuZn	Sn		
										B	25233.123.322	CuZn	Sn		*1
										B	25233.212.179	CuSn	Sn		
										B	25233.213.004	CuSn	Sn		
										B	25233.213.011	CuSn	Sn		*1
										B	25233.213.320	CuSn	Sn		
										B	25233.213.322	CuSn	Sn		
B	25233.331.011	CuFe2P	Sn												
B	25233.331.322	CuFe2P	Sn												
1	4.00 - 6.00			10.50	4.50	6.30	9.50	17.50	1.00	B	25361.123.011	CuZn	Sn	L	
Typ	Nennquerschnitt qmm	DIN	Nenngröße	a1	a2	d2	d3	l1	Mat.-dicke	Form E=Einzel B=Band	Teile-Nr.	Werkstoff	Oberfläche	Verb.-vor-schub	Fuß-note

\*1 With intermediate layer paper

\*1 Mit Papierzwischenlage

Einzelkontakte auf Anfrage

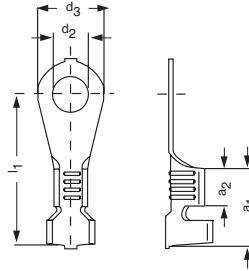
# Ring Terminals

DIN 46225 and similar types

# Krallenkabelschuhe

Ringform  
DIN 46225 und ähnliche Ausführungen

Type 1



Type	Wire cross section qmm	DIN standard	Nominal size	a1	a2	d2	d3	l1	Material thickness	Form E=single B=chain	Part number	Material	Surface	Terminal feed	Footnote
1	4.00 - 6.00	46225 Form A	A8-6	11.00	4.50	8.40	14.00	24.00	0.80	B	25235.123.009	CuZn	Sn	L	
										B	25235.123.011	CuZn			
										B	25235.212.179	CuSn			
										B	25235.213.009	CuSn			
										B	25235.213.011	CuSn			
1	4.00 - 6.00	46225 Form A	A10-6	11.00	4.50	10.50	18.50	27.00	0.80	B	25237.123.011	CuZn	Sn	L	
										B	25237.212.179	CuSn			
1	über 6 - 10	46225 Form A	A8-10	12.00	4.50	8.40	14.00	26.40	1.00	B	25247.123.009	CuZn	Sn	L	*1
										B	25247.123.011	CuZn			
										B	25247.123.322	CuZn			
										B	25247.212.179	CuSn			
1	über 6 - 10	46225 Form A	A10-10	12.00	4.50	10.50	18.50	28.50		B	25249.123.009	CuZn	Sn	L	
										B	25249.123.011	CuZn			
										B	25249.212.179	CuSn			
Typ	Nennquerschnitt qmm	DIN	Nenngröße	a1	a2	d2	d3	l1	Mat.-dicke	Form E=Einzel B=Band	Teile-Nr.	Werkstoff	Oberfläche	Verb.-vor-schub	Fuß-note

\*1 With intermediate layer paper

\*1 Mit Papierzwischenlage

Einzelkontakte auf Anfrage



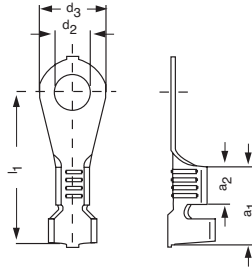
# Ring Terminals

DIN 46225 and similar types

# Krallenkabelschuhe

Ringform  
DIN 46225 und ähnliche Ausführungen

Type 1



Type	Wire cross section qmm	a1	a2	d2	d3	l1	Material thickness	Form E=single B=chain	Part number	Material	Surface	Terminal feed	Foot note
1	über 6-12	12.00	4.50	5.30	9.50	24.30	1.00	B	<b>25243.123.011</b>	CuZn	Sn	L	
								B	<b>25243.213.011</b>	CuSn	Sn		
1	über 6-12	12.00	4.50	6.50	12.00	23.00	1.00	B	<b>25245.123.011</b>	CuZn	Sn	L	*1
								B	<b>25245.123.322</b>	CuZn	Sn		
								B	<b>25245.212.004</b>	CuSn	Sn		
								B	<b>25245.212.011</b>	CuSn	Sn		
								B	<b>25245.212.179</b>	CuSn	Sn		
B	<b>25245.212.320</b>	CuSn	Sn										
Typ	Nenn-quer-schnitt qmm	a1	a2	d2	d3	l1	Mat.-dicke	Form E=Einzel B=Band	Teile-Nr.	Werkstoff	Oberfläche	Verb.-vor-schub	Fuß-note

\*1 With intermediate layer paper

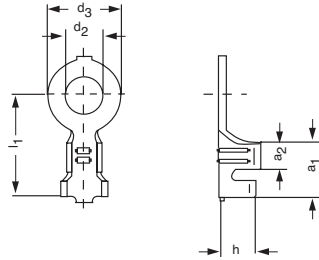
\*1 Mit Papierzwischenlage

Einzelkontakte auf Anfrage

# Ring Terminals

# Krallenkabelschuhe Ringform

Type 1



Type	Wire cross section qmm	a1	a2	d2	d3	h	l1	Material thickness	Form E=single B=chain	Part number	Material	Surface	Terminal feed
1	0.5 -1.0	5.00	2.50	3.30	6.00	3.60	9.00	0.50	B	25013.123.011 25013.411.031	CuZn Stahl	Sn Ni	L
1	0.5 -1.0	5.00	2.50	3.80	6.00	3.60	9.00	0.50	B	25014.123.011	CuZn	Sn	L
1	0.5 -1.0	5.00	2.50	3.30	7.00	3.60	9.50	0.50	B B B	25022.123.009 25022.123.011 25022.123.041	CuZn CuZn CuZn	Sn Ag	L
1	0.5 -1.0	5.00	2.50	4.30	7.00	3.60	9.50	0.50	B B B	25024.123.009 25024.123.011 25024.411.131	CuZn CuZn Stahl	Sn Ni	L
1	0.5 -1.0	5.00	2.50	5.30	9.00	3.60	10.50	0.50	B B	25025.123.009 25025.123.178	CuZn CuZn	Sn	L
1	0.5 -1.0	5.00	2.50	6.30	9.00	3.60	10.50	0.50	B B	25044.123.009 25044.123.178	CuZn CuZn	Sn	L
1	0.5 -1.0	5.00	2.50	3.20	6.00	4.50	9.00	0.50	B	25199.123.111	CuZn	Sn	L
1	0.5 -1.0	5.00	2.50	2.20	6.00	3.60	9.00	0.50	B B	25509.123.009 25509.123.011	CuZn CuZn	Sn	L
Typ	Nenn- quer- schnitt qmm	a1	a2	d2	d3	h	l1	Mat- dicke	Form E=Einzel B=Band	Teile-Nr.	Werkstoff	Oberfläche	Verb.- vor- schub

Einzelkontakte auf Anfrage

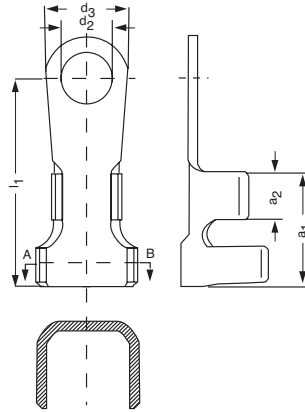




# Ring Terminals

# Krallenkabelschuhe Ringform

Type 1

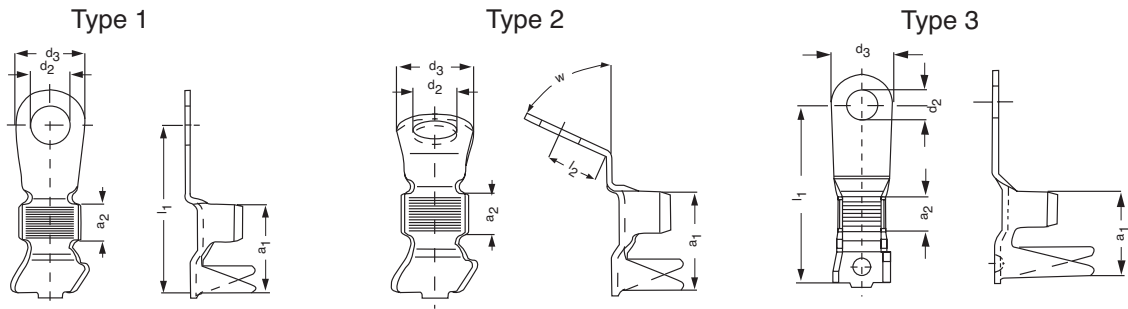


Schnitt A - B

Type	Wire cross section qmm	a1	a2	d2	d3	l1	Material thickness	Form E=Single B=chain	Part number	Material	Surface
1	16 - 25	19.00	8.00	8.40	15.00	36.00	1.80	E	<b>02944.111.025</b>	CuZn	Sn
1	35	19.00	8.00	8.40	15.00	36.00	1.80	E	<b>07103.111.025</b>	CuZn	Sn
Typ	Nennquerschnitt qmm	a1	a2	d2	d3	l1	Mat.-dicke	Form E=Einzel B=Band	Teile-Nr.	Werkstoff	Oberfläche

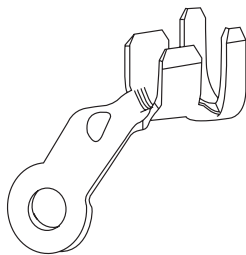
## Ring Terminals

## Krallenkabelschuhe Ringform

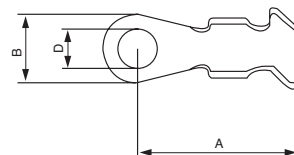


Type	Wire cross section qmm	a1	a2	d2	d3	l1	l2	W°	Material thickness	Form E=single B=chain	Part number	Material	Surface	Terminal feed
1	16 - 25	19.00	8.00	6.40	15.00	36.00			1.20	E	05838.212.178	CuSn	Sn	
										B	25838.212.178	CuSn	Sn	NQ
1	10 - 16	19.00	8.00	8.40	15.00	36.00			1.20	E	05937.212.178	CuSn	Sn	
										B	25937.212.178	CuSn	Sn	NQ
1	16 - 25	19.00	8.00	8.40	15.00	36.00			1.20	E	05938.212.178	CuSn	Sn	
										B	25938.212.178	CuSn	Sn	NQ
1	10 - 16	19.00	8.00	6.40	15.00	36.00			1.20	E	06835.212.178	CuSn	Sn	
										B	26835.212.178	CuSn	Sn	NQ
2	16 - 25	19.00	8.00	8.40	15.00		11.60	90	1.20	E	08076.212.178	CuSn	Sn	
1	25 - 35	19.00	8.00	8.40	15.00	36.00			1.20	B	25939.212.178	CuSn	Sn	NQ
3	10 - 16	19.00	8.00	6.40	12.00	35.00			1.20	B	28105.212.178	CuSn	Sn	NQ
Typ	Nennquerschnitt qmm	a1	a2	d2	d3	l1	l2	W°	Mat-dicke	Form E=Einzel B=Band	Teile-Nr.	Werkstoff	Oberfläche	Verb.-vor-schub

Type 1



Type 2

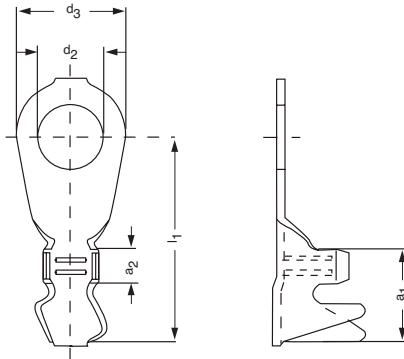


Type	A	B	D	Form E=single B=chain	Part number	Specification	Material	Surface	Terminal feed
1				E	12119.111.111	Kabelschuh	CuZn	Sn	
2	37.2	15	6.4	B	28240.212.178	Kabelschuh	CuSn	Sn	NQ
Typ	A	B	D	Form E=Einzel B=Band	Teile-Nr.	Bezeichnung	Werkstoff	Oberfläche	Verb.-vor-schub

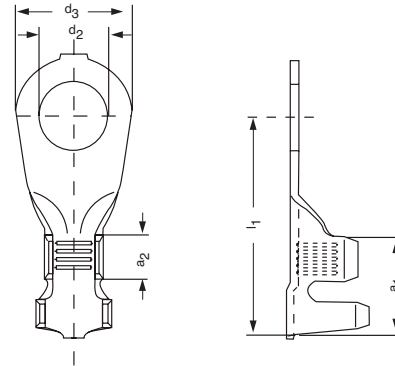
# Ring Terminals

# Krallenkabelschuhe Ringform

Type 1



Type 2



Type	Wire cross section qmm	a1	a2	d2	d3	l1	Material thickness	Form E=Single B=chain	Part number	Material	Surface	Terminal feed	Foot-note
1	6.0 - 10.0	12.00	4.50	8.40	14.00	26.50	1.00	B	25168.212.178	CuZn	Sn	L	
								B	25168.331.011	CuFe2P	Sn		
								B	25168.331.322	CuFe2P	Sn		*1
2	6.0 - 8.0	12.00	5.50	8.40	14.00	26.50	1.00	B	25923.212.004	CuSn		L	
1	6.0 - 10.0	12.00	4.50	8.40	14.00	26.50	1.00	B	25936.212.178	CuSn	Sn	L	
Typ	Nenn-quer-schnitt qmm	a1	a2	d2	d3	l1	Mat.-dicke	Form E=Einzel B=Band	Teile-Nr.	Werkstoff	Oberfläche	Verb.-vor-schub	Fuß-note

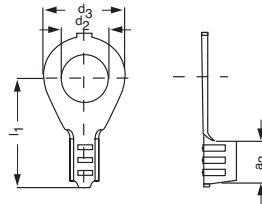
\*1 With intermediate layer paper

\*1 Mit Papierzwischenlage

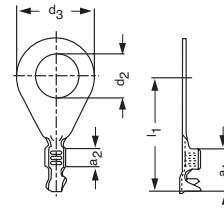
# Ring Terminals

# Krallenkabelschuhe Ringform

Type 1



Type 2



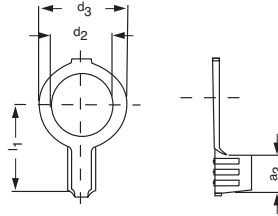
Type	Wire cross section qmm	a1	a2	d2	d3	l1	Material thickness	Form E=single B=chain	Part number	Material	Surface	Terminal feed
1	4.00 - 6.00		6.00	5.30	10.00	15.00	1.00	B	25111.111.011	CuZn	Sn	L
1	0.5 - 1.0		3.50	3.20	6.00	10.00	0.60	B	25142.123.011	CuZn	Sn	L
1	1.5 - 2.5		5.00	5.30	9.00	11.50	0.50	B	25173.123.011	CuZn	Sn	L
1	1.5 - 2.5		5.00	4.30	9.00	11.50	0.50	B	25467.123.011	CuZn	Sn	L
2	0.35	6.50	3.00	6.50	12.00	17.50	0.38	B	25688.201.009	CuSn		NQ
Typ	Nenn-quer-schnitt qmm	a1	a2	d2	d3	l1	Mat.-dicke	Form E=Einzel B=Band	Teile-Nr.	Werkstoff	Oberfläche	Verb.-vor-schub

Einzelkontakte auf Anfrage

# Ring Terminals

# Krallenkabelschuhe Ringform

Type 1

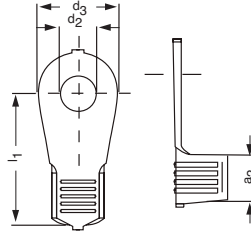


Type	Wire cross section qmm	a2	d2	d3	l1	Material thickness	Form E=single B=chain	Part number	Material	Surface	Terminal feed
1	0.5 - 1.0	3.20	4.10	6.80	6.90	0.50	B	25028.123.011	CuZn	Sn	L
1	0.5 - 1.0	2.00	3.20	5.50	5.20	0.50	B	25292.123.009	CuZn		L
1	0.5 - 1.0	2.00	2.60	5.50	5.20	0.50	B	25384.123.031	CuZn	Ni	L
Typ	Nenn-quer-schnitt qmm	a2	d2	d3	l1	Mat.-dicke	Form E=Einzel B=Band	Teile-Nr.	Werkstoff	Oberfläche	Verb.-vor-schub

# Ring Terminals

# Krallenkabelschuhe Ringform

Type 1

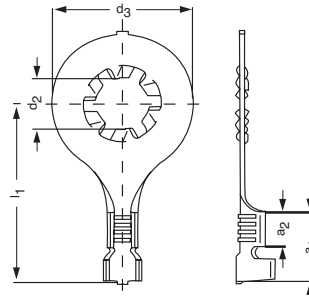


Type	Wire cross section qmm	a2	d2	d3	l1	Material thickness	Form E=single B=chain	Part number	Material	Surface	Terminal feed
1	4.00 - 6.00	6.00	4.05	10.00	15.00	1.00	B	25820.111.011	CuZn	Sn	L
Type	Nenn-quer-schnitt qmm	a2	d2	d3	l1	Mat.-dicke	Form E=Einzel B=Band	Teile-Nr.	Werkstoff	Oberfläche	Verb.-vor-schub

## Ring Terminals for ground connection

## Krallenkabelschuhe Ringform für Masseanschluß

Type 1



Type	Wire cross section qmm	a1	a2	d2	d3	l1	Material thickness	Form E=single B=chain	Part number	Material	Surface	Terminal feed
1	0.5 - 1.0	9.00	4.50	5.30	12.00	22.00	0.60	B	25791.214.012	CuSn	Sn	L
1	1.5 - 2.5	9.00	4.50	6.50	18.50	24.00	0.60	B	25800.214.012	CuSn	Sn	L
1	0.5 - 1.0	9.00	4.50	6.50	18.50	24.00	0.60	B	25801.214.012	CuSn	Sn	L
1	1.5 - 2.5	9.00	4.50	5.30	12.00	22.00	0.60	B	25803.214.012 25803.417.011	CuSn ST4 K40 RP	Sn Sn	L
1	1.5 - 2.5	9.00	4.50	8.40	18.50	24.00	0.60	B	25804.214.012	CuSn	Sn	L
1	4.00 - 6.00	11.00	4.50	5.30	12.00	25.00	0.80	B	25806.214.012	CuSn	Sn	L
1	4.00 - 6.00	11.00	4.50	6.50	18.50	27.00	0.80	B	25807.214.012	CuSn	Sn	L
1	4.00 - 6.00	11.00	4.50	8.40	18.50	27.00	0.80	B	25808.214.012	CuSn	Sn	L
1	0.5 - 1.0	9.00	4.50	8.40	18.50	24.00	0.60	B	25809.214.012	CuSn	Sn	L
1	4.00 - 6.00	11.00	4.50	10.50	18.50	27.00	0.80	B	25810.214.012	CuSn	Sn	L
Typ	Nenn-quer-schnitt qmm	a1	a2	d2	d3	l1	Mat.-dicke	Form E=Einzel B=Band	Teile-Nr.	Werkstoff	Oberfläche	Verb.-vor-schub

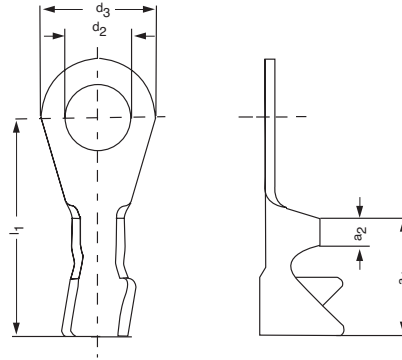
# Ring Terminals

for soldering  
DIN 46236 and similar types

# Krallenkabelschuhe

Ringform zum Anlöten  
DIN 46236 und ähnliche Ausführungen

Type 1



Type	Wire cross section qmm	DIN standard	Nominal size	a1	a2	d2	d3	l1	Material thickness	Form E=Single B=chain	Part number	Material	Surface
1	10	46236 FormA	A5X4.5	12.50	3.00	5.30	9.50	22.00	1.20	E	00535.111.025	CuZn	Sn
1	10	46236 FormA	A6X4.5	12.50	3.00	6.50	12.00	23.00	1.20	E	00536.111.011 00536.111.025	CuZn CuZn	Sn Sn
1	10	46236 FormA	A8X4.5	12.50	3.00	8.40	14.00	25.00	1.20	E	00537.111.025	CuZn	Sn
1	0.5 - 2.5	46236 FormA	A4X2.3	12.50	3.00	4.30	8.00	21.00	0.75	E	02086.111.025	CuZn	Sn
1	0.5 - 2.5	46236 FormA	A5X2.3	12.50	3.00	5.30	9.50	22.00	0.75	E	02087.111.025	CuZn	Sn
1	0.5 - 2.5	46236 FormA	A6X2.3	12.50	3.00	6.50	12.00	23.00	0.75	E	02088.111.025	CuZn	Sn
1	0.5 - 2.5	46236 FormA	A8X2.3	12.50	3.00	8.40	14.00	25.00	0.75	E	02089.111.025	CuZn	Sn
1	0.5 - 2.5	46236 FormA	A12X2.3	12.50	3.00	13.00	18.50	27.00	0.75	E	02092.111.025	CuZn	Sn
1	4.00 - 6.00	46236 FormA	A5X3.4	12.50	3.00	5.30	9.50	22.00	1.00	E	02097.111.025	CuZn	Sn
1	4.00 - 6.00	46236 FormA	A6X3.4	12.50	3.00	6.50	12.00	23.00	1.00	E	02098.111.025	CuZn	Sn
1	4.00 - 6.00	46236 FormA	A8X3.4	12.50	3.00	8.40	14.00	25.00	1.00	E	02099.111.025	CuZn	Sn
1	4.00 - 6.00	46236 FormA	A10X3.4	12.50	3.00	10.50	18.50	27.00	1.00	E	02101.111.025	CuZn	Sn
Typ	Nenn-quer-schnitt qmm	DIN	Nenn-größe	a1	a2	d2	d3	l1	Mat-dicke	Form E=Einzel B=Band	Teile-Nr.	Werkstoff	Oberfläche



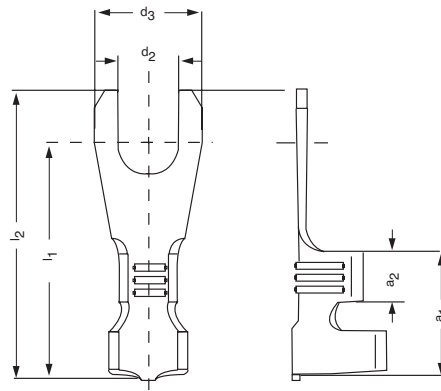
## Ring Terminals

DIN 46225 and similar types

## Krallenkabelschuhe

Laschenform offen  
DIN 46225 und ähnliche Ausführungen

Type 1



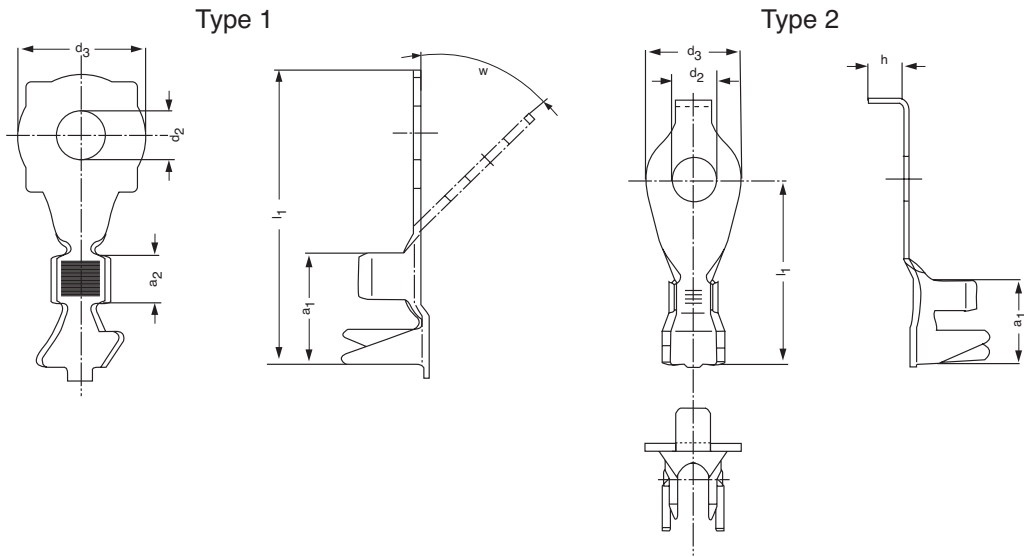
Type	Wire cross section qmm	DIN standard	Nominal size	a1	a2	d2	d3	l1	l2	Mat-erial thickness	Form E=Single B=chain	Part number	Material	Surface	Ter- minal Feed
1	0.5 -1.0	46225 Form B	4.0- 1.0	8.75	4.50	4.30	8.00	18.00	21.75	0.60	B	25204.123.011	CuZn	Sn	L
1	1.5 - 2.5	46225 Form B	4.0 - 2.5	8.75	4.50	4.30	8.00	18.00	21.75	0.60	B	25216.123.011	CuZn	Sn	L
1	1.5 - 2.5	46225 Form B	5.0 - 2.5	8.75	4.50	5.30	9.50	17.25	21.75	0.60	B	25218.123.011	CuZn	Sn	L
1	4.00 - 6.00	46225 Form B	4.0 - 6.0	10.75	4.50	4.30	8.00	21.00	24.75	0.80	B	25230.123.011	CuZn	Sn	L
Typ	Nenn- quer- schnitt qmm	DIN	Nenn- gröÙe	a1	a2	d2	d3	l1	l2	Mat- dicke	Form E=Einzel B=Band	Teile-Nr.	Werkstoff	Oberfläche	Verb.- vor- schub

# Claw Terminals

special types

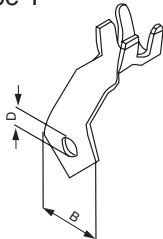
# Krallenkabelschuhe

in Sonderausführungen

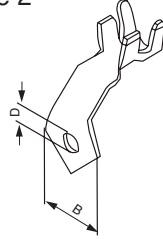


Type	Wire cross section qmm	a1	a2	d2	d3	h	l1	Material thickness	Form E=Single B=chain	Part number	Material	Surface	Terminal Feed
1	10.0 - 16.0	19.00	8.00	8.40	21.00		50.00	1.20	E	06837.111.178	CuZn	Sn	
2	6.0 - 10.0	12.00		6.40	14.00	5.00	26.00	1.00	B	25721.213.190	CuSn	Sn	NQ
Typ	Nennquerschnitt qmm	a1	a2	d2	d3	h	l1	Mat.-dicke	Form E=Einzel B=Band	Teile-Nr.	Werkstoff	Oberfläche	Verbo-vorschub

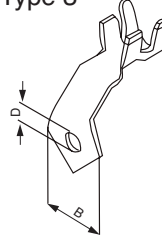
Type 1



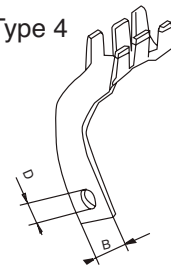
Type 2



Type 3



Type 4



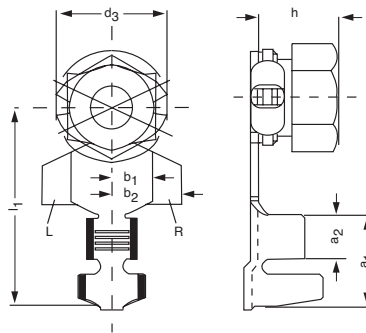
Type	Wire cross section qmm	B	D	Form E=Single B=chain	Part number	Specification	Material	Surface	Terminal Feed
1	25-41	27	8.4	B	12837.212.111	Kabelschuh 8-4	CuSn6	Sn	NQ
2	25-41	27	8.4	B	12852.212.111	Kabelschuh 8-4	CuSn6	Sn	NQ
3	25-41	27	8.4	B	12940.212.111	Kabelschuh 8-4	CuSn6	Sn	NQ
4	25-35	20	8.4	B	12827.212.111	Kabelschuh 8/9	CuSn6	Sn	NQ
Typ	Nennquerschnitt qmm	B	D	Form E=Einzel B=Band	Teile-Nr.	Bezeichnung	Werkstoff	Oberfläche	Verbo-vorschub



## Claw Terminals with nut for bolt connection

## Krallenkabelschuhe mit Mutter für Gewindebolzen

Type 1



Type	Wire cross section qmm	a1	a2	b1	b2	d3	h	l1	Material thickness	Form E=Single B=chain	Part number	Specification	Material	Surface	Terminal Feed	Foot-note
1	0.75 - 1.5	7.70	4.00	5.50		12.00	8.50	22.00	0.80	B	25630.212.179	Kabelschuh M5	CuSn	Sn	NQ	*1
1	0.75 - 1.5	7.70	4.00	5.50		12.00	8.50	21.70	0.80	B	26407.212.179	Kabelschuh M4	CuSn	Sn	NQ	*1
1	0.75 - 1.5	7.70	4.00	5.50		12.00	8.50	21.70	0.80	B	26408.212.179	Kabelschuh M5	CuSn	Sn	NQ	*1
1	0.75 - 1.5	7.70	4.00		7.80	12.00	8.50	22.00	0.80	B	26713.122.179	Kabelschuh M5	CuZn	Sn	NQ	*2
1	0.75 - 1.5	7.70	4.00	5.50		12.00	8.50	21.70	0.80	B	28072.212.179	Kabelschuh M6	CuSn	Sn	NQ	*1
1	0.75 - 1.5	7.70	4.00	5.50		12.00	8.50	21.70	0.80	B	28075.122.179	Kabelschuh M6	CuZn	Sn	NQ	*1
Typ	Nennquerschnitt qmm	a1	a2	b1	b2	d3	h	l1	Mat-dicke	Form E=Einzel B=Band	Teile-Nr.	Bezeichnung	Werkstoff	Oberfläche	Verb.-vor-schub	Fuß-note

\*1 Without keying

\*2 Keying L

\*1 Ohne Kodierung

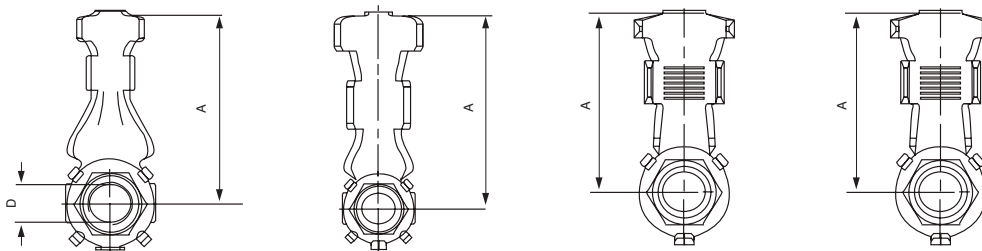
\*2 Kodierung L

Type 1

Type 2

Type 3

Type 4



Type	Wire cross section qmm	A	D	Material thickness	Form E=Single B=chain	Part number	Specification	Material	Surface	Terminal Feed
1		25	M5	0.8	B	28135.331.179	Kabelschuh M5	CuFe2P	Sn	NQ
1		33	M5	1.2	B	28333.331.179	Kabelschuh M5	CuFe2P	Sn	NQ
1		25	M5	0.8	B	28334.331.179	Kabelschuh M5	CuFe2P	Sn	NQ
1	6-10	26	M5		B	28335.331.179	Kabelschuh M5	CuFe2P	Sn	NQ
2					B	28134.331.179	Kabelschuh M6	CuFe2P	Sn	NQ
3		27.5			B	28124.122.179	Kabelschuh M6	CuZn30	Sn	NQ
4		27.5			B	28171.122.179	Kabelschuh M6	CuZn30	Sn	NQ
Typ	Nennquerschnitt qmm	a1	a2	Mat-dicke	Form E=Einzel B=Band	Teile-Nr.	Bezeichnung	Werkstoff	Oberfläche	Verb.-vor-schub



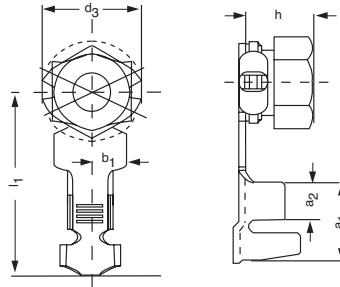
## Claw Terminals

with nut for bolt connection

## Krallenkabelschuhe

mit Mutter für Gewindebolzen

Type 1



Type	Wire cross section qmm	a1	a2	b1	d3	h	l1	Material thickness	Form E=Single B=chain	Part number	Specification	Material	Surface	Terminal Feed
1	1.5 - 2.5	9.00	4.50	4.50	12.00	8.50	22.00	0.80	B	25248.212.179	Kabelschuh M5	CuSn	Sn	NQ
1	1.5 - 2.5	9.00	4.50	4.50	12.00	8.50	22.00	0.80	B	25360.212.179	Kabelschuh M4	CuSn	Sn	NQ
1	1.5 - 2.5	9.00	4.50	4.50	12.00	8.50	22.00	0.80	B	26718.212.179	Kabelschuh M5	CuSn	Sn	NQ
1	1.5 - 2.5	9.00	4.50	4.50	12.00	8.50	22.00	0.80	B	26738.122.179	Kabelschuh M6	CuZn	Sn	NQ
1	1.5 - 2.5	9.00	4.50	4.50	12.00	8.50	21.70	0.80	B	28071.212.179	Kabelschuh M6	CuSn	Sn	NQ
Typ	Nennquerschnitt qmm	a1	a2	b1	d3	h	l1	Mat.-dicke	Form E=Einzel B=Band	Teile-Nr.	Bezeichnung	Werkstoff	Oberfläche	Verb.-vorschub

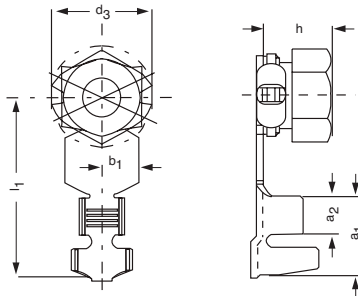
# Claw Terminals

with nut for bolt connection

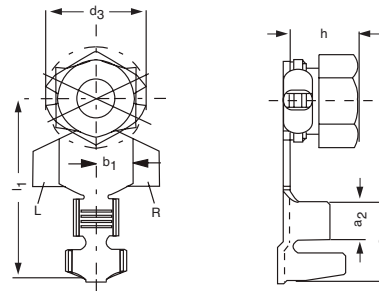
# Krallenkabelschuhe

mit Mutter für Gewindebolzen

Type 1



Type 2



Type	Wire cross section qmm	a1	a2	b1	d3	h	l1	Material thickness	Form E=Single B=chain	Part number	Specification	Material	Surface	Terminal Feed	Foot-note
1	2.5 - 4.0	8.50	4.50	4.50	12.50	8.50	22.00	0.80	B	26123.212.178	Kabelschuh M6	CuSn	Sn	NQ	*2
1	2.5 - 4.0	8.50	4.50	4.50	12.50	8.50	22.00	0.80	B	26328.212.179	Kabelschuh M6	CuSn	Sn	NQ	*1
2	4.0 - 6.0	10.00	4.50	4.50	12.00	8.50	22.00	0.80	B	26739.122.179	Kabelschuh M6	CuZn	Sn	NQ	*1
Typ	Nennquerschnitt qmm	a1	a2	b1	d3	h	l1	Mat.-dicke	Form E=Einzel B=Band	Teile-Nr.	Bezeichnung	Werkstoff	Oberfläche	Verb.-vorschub	Fußnote

\*1 Without keying  
 \*2 Keying in front

\*1 Ohne Kodierung  
 \*2 Kodierung vorne

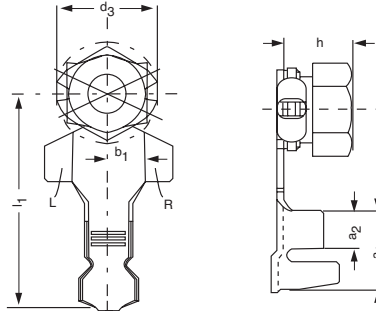
## Claw Terminals

with nut for bolt connection

## Krallenkabelschuhe

mit Mutter für Gewindebolzen

Type 1



Type	Wire cross section qmm	a1	a2	b1	d3	h	l1	Material thickness	Form E=Single B=chain	Part number	Specification	Material	Surface	Terminal Feed	Foot-note
1	6.00 - 10.00	12.00	5.50	4.50	12.50	8.50	27.00	1.00	B	<b>26721.122.179</b> <b>26721.212.179</b>	Kabelschuh M6 Kabelschuh M6	CuZn CuSn	Sn Sn	NQ	*1 *1
1	6.00 - 10.00	12.00	5.50	4.50	12.50	8.50	27.00	1.00	B	<b>26741.122.179</b>	Kabelschuh M6	CuZn	Sn	NQ	*1
1	6.00 - 10.00	12.00	5.50	4.50	12.50	8.50	27.00	1.00	B	<b>26745.122.179</b> <b>26745.212.179</b>	Kabelschuh M5 Kabelschuh M5	CuZn CuSn	Sn Sn	NQ	*1 *1
Typ	Nennquerschnitt qmm	a1	a2	b1	d3	h	l1	Mat.-dicke	Form E=Einzel B=Band	Teile-Nr.	Bezeichnung	Werkstoff	Oberfläche	Verb.-vorschub	Fuß-note

\*1 Without keying

\*1 Ohne Kodierung

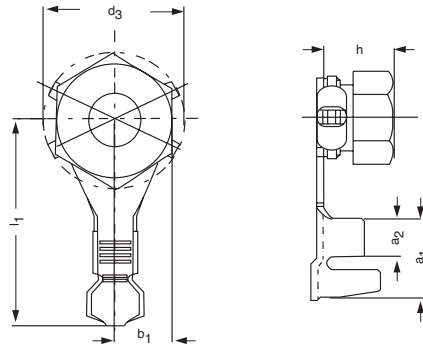
## Claw Terminals

with nut for bolt connection

## Krallenkabelschuhe

mit Mutter für Gewindebolzen

Type 1



Type	Wire cross section qmm	a1	a2	b1	d3	h	l1	Material thickness	Form E=Single B=chain	Part number	Specification	Material	Surface	Terminal Feed
1	6.00 - 10.00	14.00	6.50	4.50	15.50	10.00	27.00	1.00	B	26306.212.179	Kabelschuh M8	CuSn	Sn	NQ
Typ	Nenn-quer-schnitt qmm	a1	a2	b1	d3	h	l1	Mat-dicke	Form E=Einzel B=Band	Teile-Nr.	Bezeichnung	Werkstoff	Oberfläche	Verb-vor-schub

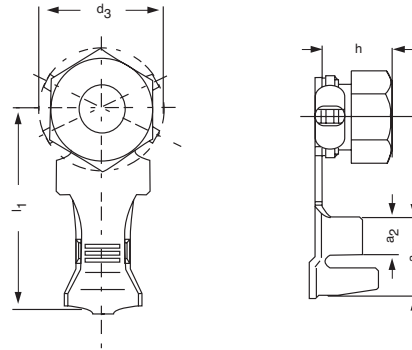
## Claw Terminals

with nut for bolt connection

## Krallenkabelschuhe

mit Mutter für Gewindebolzen

Type 1



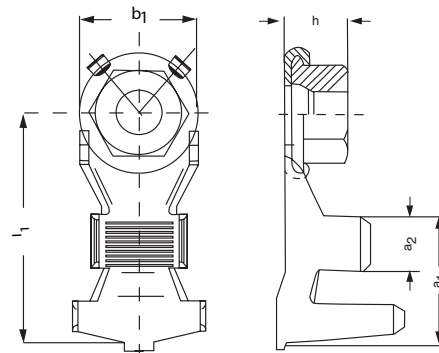
Type	Wire cross section qmm	a1	a2	d3	h	l1	Material thickness	Form E=Single B=chain	Part number	Specification	Material	Surface	Terminal Feed
1	3.00 - 6.00	9.00	4.00	12.00	8.50	21.70	0.80	B	25020.212.179	Kabelschuh M5	CuSn	Sn	NQ
Typ	Nennquerschnitt qmm	a1	a2	d3	h	l1	Mat.-dicke	Form E=Einzel B=Band	Teile-Nr.	Bezeichnung	Werkstoff	Oberfläche	Verb.-vor-schub



## Claw Terminals with nut for bolt connection

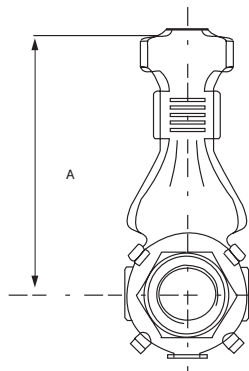
## Krallenkabelschuhe mit Mutter für Gewindebolzen

Type 1

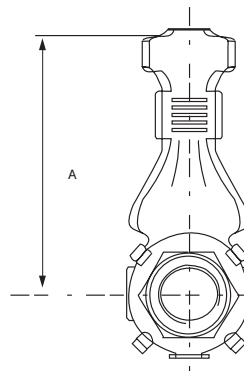


Type	Wire cross section qmm	a1	a2	b1	h	l1	Mat-erial thick-ness	Form E=Single B=chain	Part number	Specification	Material	Surface	Ter- minal Feed
1	16.0 - 25.0	19.00	8.00	13.80	9.50	34.50	1.20	E	<b>08018.122.179</b>	Kabelschuh M6	CuZn	Sn	
								B	<b>28018.122.179</b>	Kabelschuh M6	CuZn	Sn	NQ
1	16.0 - 25.0	19.00	8.00	16.90	9.50	34.50	1.20	B	<b>28024.122.179</b>	Kabelschuh M8	CuZn	Sn	NQ
1	25.0 - 35.0	19.00	8.00	16.50	9.50	34.50	1.20	B	<b>28042.201.178</b>	Kabelschuh M8	CuSn	Sn	NQ
Typ	Nenn-quer-schnitt qmm	a1	a2	b1	h	l1	Mat.-dicke	Form E=Einzel B=Band	Teile-Nr.	Bezeichnung	Werkstoff	Oberfläche	Verb.-vor-schub

Type 1



Type 2



Type	A	Form E=Single B=chain	Part number	Specification	Material	Surface	Ter- minal Feed
1	27.50	B	<b>28117.122.179</b>	Kabelschuh M6	CuZn30	Sn	NQ
2	27.50	B	<b>28179.122.179</b>	Kabelschuh M6	CuSn30	Sn	NQ
Typ	A	Form E=Einzel B=Band	Teile-Nr.	Bezeichnung	Werkstoff	Oberfläche	Verb.-vor-schub



# Claw Terminals

special types

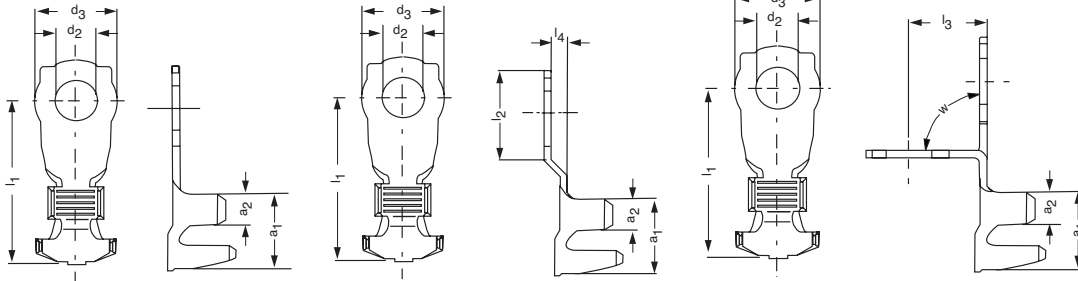
# Krallenkabelschuhe

in Sonderausführungen

Type 1

Type 2

Type 3

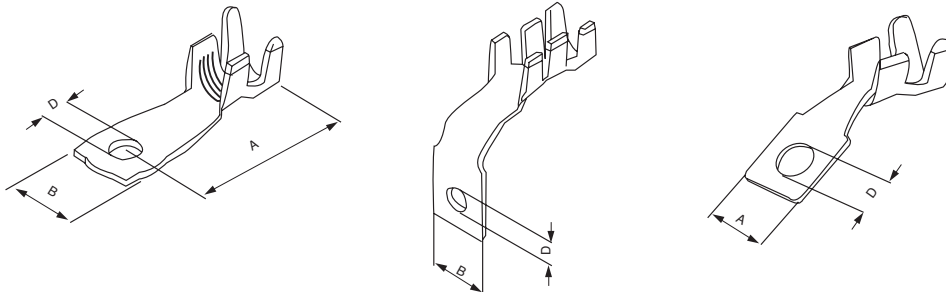


Type	Wire cross section qmm	a1	a2	d2	d3	l1	l2	l3	l4	W°	Material thickness	Form E=Single B=chain	Part number	Material	Surface	Terminal Feed
1	25.0 - 35.0	19.00	9.00	8.40	21.00	46.00					1.80	E	<b>05401.111.111</b>	CuZn	Sn	
												B	<b>25401.111.111</b>	CuZn	Sn	NQ
1	16.0 - 25.0	19.00	9.00	8.40	21.00	46.00					1.80	E	<b>05963.111.111</b>	CuZn	Sn	
2	25.0 - 35.0	19.00	9.00	8.40	21.00	46.00	22.00		6.00		1.80	B	<b>08081.111.111</b>	CuZn	Sn	NQ
3	35.0 - 55.0	19.00	9.00	8.40	21.00	46.00		19.00		90	1.80	E	<b>12454.111.111</b>	CuZn	Sn	
3	16 + 35	19.00	9.00	8.40	21.00	46.00		23.00		90	1.80	E	<b>12481.111.111</b>	CuZn	Sn	
1	25.0 - 35.0	19.00	9.00	10.50	21.00	46.00					1.80	B	<b>25745.111.111</b>	CuZn	Sn	NQ
1	10.0 - 16.0	19.00	9.00	10.50	21.00	46.00					1.80	B	<b>28019.111.111</b>	CuZn	Sn	NQ
Typ	Nennquerschnitt qmm	a1	a2	d2	d3	l1	l2	l3	l4	W°	Mat.-dicke	Form E=Einzel B=Band	Teile-Nr.	Werkstoff	Oberfläche	Verb.-vor-schub

Type 1

Type 2

Type 3



Type	Wire cross section qmm	A	B	D	Form E=Single B=chain	Part number	Specification	Material	Surface	Terminal Feed
1		46	21	8.4		<b>08108.111.111</b>	Kabelschuh 8-3	CuZn	Sn	
2	25		19.9	8.4	B	<b>12782.212.111</b>	Kabelschuh 8/9	CuSn6	Sn	NQ
3	10-16 mm	16		8.4	B	<b>28186.201.178</b>	Kabelschuh 8-1	CuSn4	Sn	NQ
Typ	Nennquerschnitt qmm	A	B	D	Form E=Einzel B=Band	Teile-Nr.	Bezeichnung	Werkstoff	Oberfläche	Verb.-vor-schub



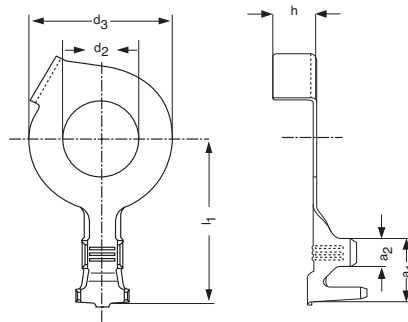
# Claw Terminals

special types

# Krallenkabelschuhe

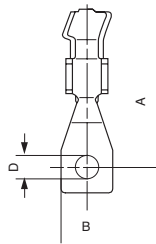
in Sonderausführungen

Type 1

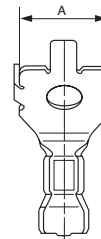


Type	Wire cross section qmm	a1	a2	d3	h	l1	Material thickness	Form E=Single B=chain	Part number	Material	Surface
1	3.15 - 6.0	9.00	4.00	20.00	6.00	23.50	0.70	E	12488.143.011	CuZn	Sn
Typ	Nennquerschnitt qmm	a1	a2	d3	h	l1	Mat-dicke	Form E=Einzel B=Band	Teile-Nr.	Werkstoff	Oberfläche

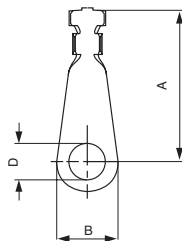
Type 1



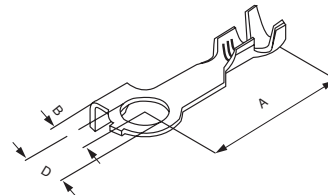
Type 2



Type 3



Type 4



Type	Wire cross section qmm	A	B	D	Material thickness	Form E=Single B=chain	Part number	Specification	Material	Surface	Terminal Feed
1	10-16 mm <sup>2</sup>	36	12	5.4		B	28154.212.178	Kabelschuh 5-1	CuSn	Sn	NQ
2	1.2-2.5	10.5				B	28184.201.178	Kabelschuh 4/5	CuSn	Sn	NQ
3	0.75	23.45	7	6.4	0.6	B	28257.213.179	Kabelschuh 6-2	CuSn	Sn	L
4		35	12	6.4	1	B	28369.201.179	Kabelschuh 6-1	CuSn	Sn	NQ
Typ	Nennquerschnitt qmm	A	B	D	Mat-dicke	Form E=Einzel B=Band	Teile-Nr.	Bezeichnung	Werkstoff	Oberfläche	Verb.-vor-schub



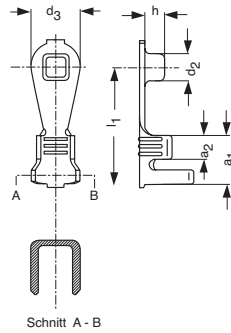
# Claw Terminals

special types

# Krallenkabelschuhe

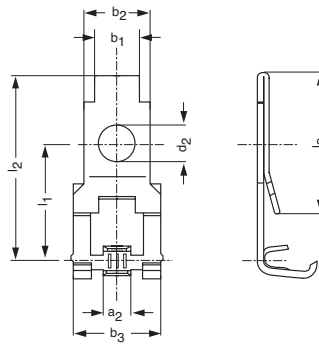
in Sonderausführungen

Type 1



Type	Wire cross section qmm	a1	a2	d2	d3	h	l1	Material thickness	Form E=Single B=chain	Part number	Material	Terminal Feed
1	0.5 - 1.0	6.00	3.00	3.50	6.00	2.50	14.50	0.50	B	25583.111.111	CuZn	L
Typ	Nenn-quer-schnitt qmm	a1	a2	d2	d3	h	l1	Mat.-dicke	Form E=Einzel B=Band	Teile-Nr.	Werkstoff	Verb.-vor-schub

Type 1



Type	Wire cross section qmm	a2	b1	b2	b3	d2	l1	l2	l3	Material thickness	Form E=Single B=chain	Part number	Material	Terminal Feed	Foot-note
1	0.75 - 1.5	3.20	6.00	7.50	10.00	4.50	12.70	20.70	16.00	0.60	B	25581.123.009	CuZn	SQ	*1
Typ	Nenn-quer-schnitt qmm	b1	a2	b2	b3	d2	l1	l2	l3	Mat.-dicke	Form E=Einzel B=Band	Teile-Nr.	Werkstoff	Verb.-vor-schub	Fuß-note

\*1 Side way feed right

\*1 Einlauf der Kontakte in das Crimpwerkzeug von rechts



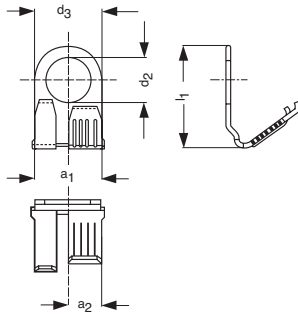
# Flag Type Terminals

ring type with lateral crimping area

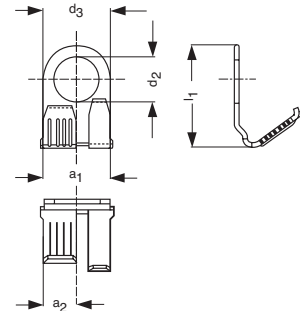
# Kabelschuhe

Laschenform mit seitlichem Leiteranschluß

Type 1



Type 2



Type	Wire cross section qmm	a1	a2	d2	d3	l1	Material thickness	Form E=Single B=chain	Part number	Material	Surface	Terminal Feed	Foot-note
2	0.5 - 1.5	7.50	4.00	5.20	8.00	13.00	0.50	B	25391.123.111	CuZn	Sn	L	*1
1	0.5 - 1.5	7.50	4.00	4.20	8.00	13.00	0.50	B	25478.123.111	CuZn	Sn	L	
1	0.5 - 1.5	7.50	4.00	5.20	8.00	13.00	0.50	B	25479.123.111	CuZn	Sn	L	
Typ	Nennquerschnitt qmm	a1	a2	d2	d3	l1	Mat-dicke	Form E=Einzel B=Band	Teile-Nr.	Werkstoff	Oberfläche	Verb.-vor-schub	Fuß-note

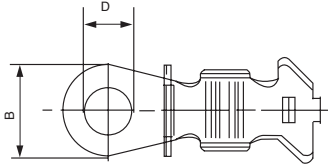
\*1 Terminal feed: flag right hand

\*1 Einlauf der Kontakte: Fahne rechts

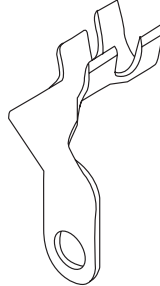
## Claw Terminals special types

## Krallenkabelschuhe in Sonderausführungen

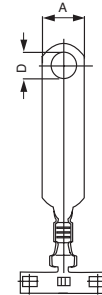
Type 1



Type 2



Type 3

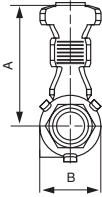


Type	Wire cross section qmm	A	B	D	Material thickness	Form E=Single B=chain	Part number	Specification	Material	Surface	Terminal Feed
1			15	6.4			05405.212.178	Kabelschuh 6-2	CuSn	Sn	
2	10-16				1.2	B	12836.201.178	Kabelschuh 8-1	CuSn	Sn	NQ
3		9		5.4	0.6	B	28209.331.179	Kabelschuh 5-2	CuSn	Sn	NQ
Typ	Nennquerschnitt qmm	A	B	D	Mat.-dicke	Form E=Einzel B=Band	Teile-Nr.	Bezeichnung	Werkstoff	Oberfläche	Verb.-vor-schub

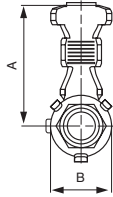
## Claw Terminals with nut for bolt connection

## Krallenkabelschuhe mit Mutter für Gewindebolzen

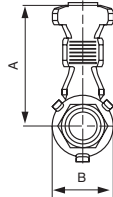
Type 1



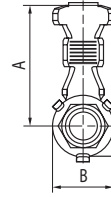
Type 2



Type 3

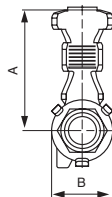


Type 4

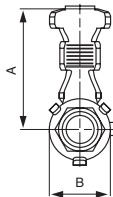


Type	A	B	Ma- terial thick- ness	Form E=Single B=chain	Part number	Specification	Material	Surface	Ter- minal Feed
1	27.5	14.2	1.2	B	28118.122.179	Kabelschuh M6	CuZn	Sn	NQ
2	27.5	14.2	1.2	B	28119.122.179	Kabelschuh M6	CuZn	Sn	NQ
3	27.5	14.2	1.2	B	28120.122.179	Kabelschuh M6	CuZn	Sn	NQ
4	27.5	14.2	1.2	B	28140.122.179	Kabelschuh M6	CuZn	Sn	NQ
Typ	A	B	Mat- dicke	Form E=Einzel B=Band	Teile-Nr.	Bezeichnung	Werkstoff	Oberfläche	Verb- vor- schub

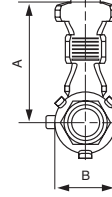
Type 1



Type 2



Type 3



Type	A	B	Ma- terial thick- ness	Form E=Single B=chain	Part number	Specification	Material	Surface	Ter- minal Feed
1	27.5	14.2	1.2	B	28173.122.179	Kabelschuh M6	CuZn	Sn	NQ
2	27.5	14.2	1.2	B	28175.122.179	Kabelschuh M6	CuZn	Sn	NQ
3	27.5	14.2	1.2	B	28358.122.179	Kabelschuh M6	CuZn	Sn	NQ
Typ	A	B	Mat- dicke	Form E=Einzel B=Band	Teile-Nr.	Bezeichnung	Werkstoff	Oberfläche	Verb- vor- schub