



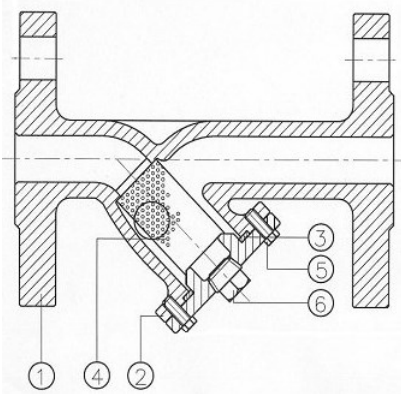
STAINLESS STEEL VALVES

GENEBRE PART: 2461 STAINLESS STEEL FLANGED Y TYPE STRAINER PN16



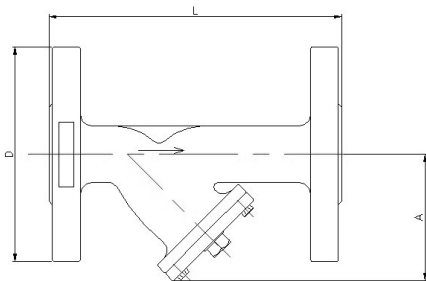
SPECIFICATIONS

1	Material CF8M (316 Stainless Steel)
2	Ends flanged DIN 2501 PN16
3	Max working pressure 16 Bar
4	Working temperature -30°C to +240°C



MATERIALS

1	CF8M (316 Stainless Steel)
2	CF8M (316 Stainless Steel)
3	PTFE
4	CF8M (316 Stainless Steel)
5	SS 304
6	SS 316



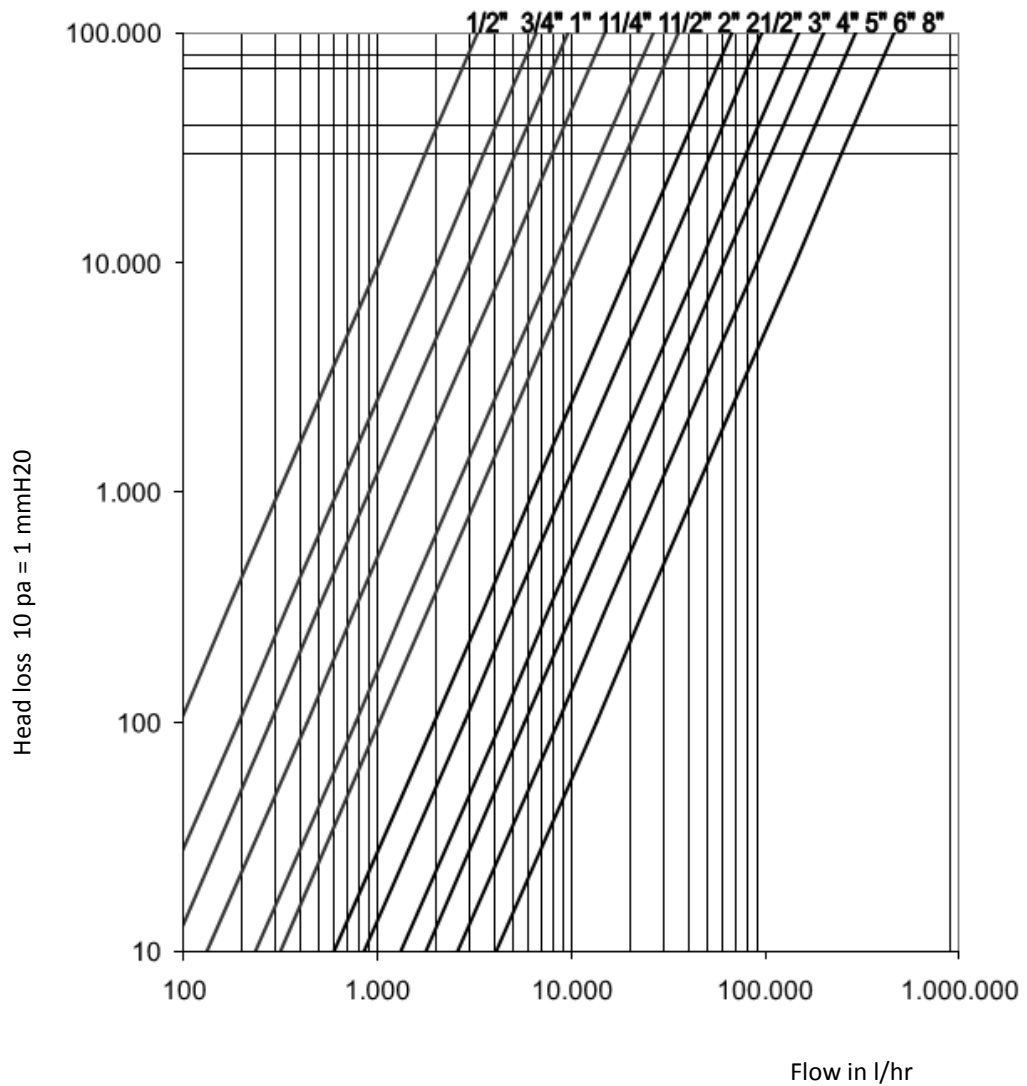
DIMENSIONS

AVOL REF	SIZE	A mm	L mm	Mesh Hole mm	Wt Kg
2461 04	1/2"	75	130	1	1.95
2461 05	3/4"	90	150	1	2.75
2461 06	1"	100	160	1	3.70
2461 07	1 1/4"	115	180	1	5.90
2461 08	1 1/2"	130	200	1	6.40
2461 09	2"	150	230	1	8.90
2461 10	2 1/2"	190	290	2	12.95
2461 11	3"	200	310	2	18.15
2461 12	4"	230	350	2	24.30
2461 13	5"	280	400	2	38.35
2461 14	6"	300	480	2	61.30
2461 16	8"	400	605	2	115.00



GENEBRE PART: 2461 STAINLESS STEEL FLANGED Y TYPE STRAINER PN16

HEAD LOSS DIAGRAM



Kv FIGURES

D	Inch	1/2"	3/4"	1"	1 1/4"	1 1/2"	2"	2 1/2"	3"	4"	5"	6"	8"
Kv	m ³ /h	3,30	6,60	9,70	14,90	26,60	35,40	67,20	96,10	149,00	198,50	294,60	462,50