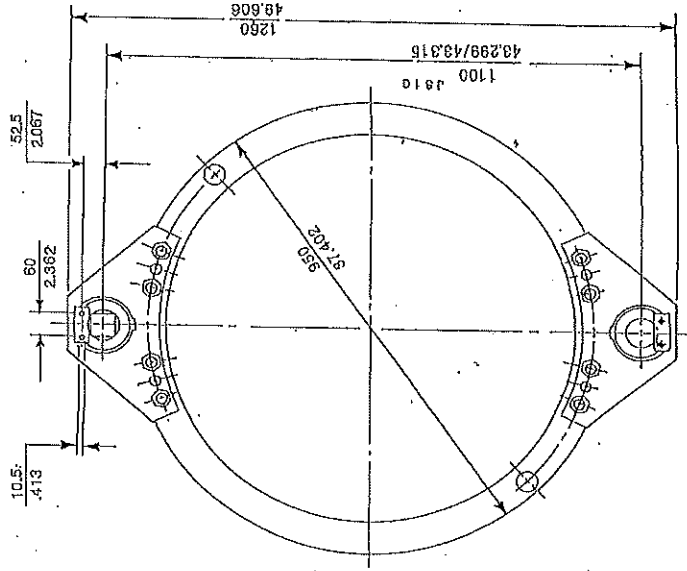
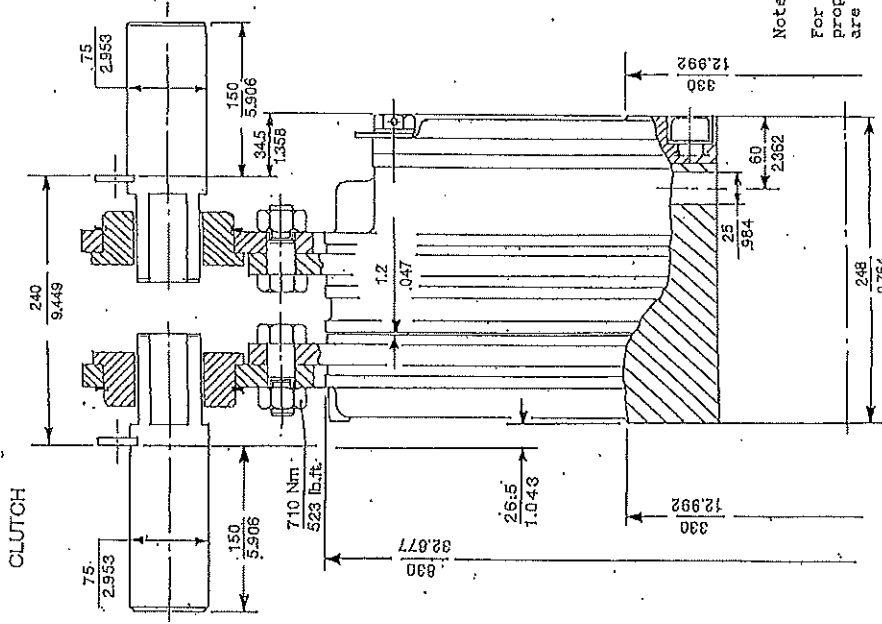


Compressor press A29

32

CLUTCH



OTHER AVAILABLE CLUTCH & BRAKE TORQUES

SPRING CONFIGURATION	301	331	332	333	334
CLUTCH TORQUE @ 5.5 BAR (Nm)	24000	34000	38000	43000	
@ 80 PSI (Lb-in)	212300	300700	336100	380300	
BRAKE TORQUE (Nm)	27000	18000	13500	9000	
(Lb-in)	238600	159200	119400	79800	

PILOT BORE
125 mm 4.92 inches

MAX BORE
200 mm w/ .45 x 10.4 KEYWAY(S) (Nom)
7.874 inches w/ 1.77 x 0.41 KEYWAY(S) (Nom)

MAX LOCKING DEVICE
SIZE 190 x 250 mm METRIC SERIES
RINGFEDER RIN 7012
BIKON 4000 SERIES 7 1/2 inches, inch SERIES

RECOMMENDED MINIMUM AIR LINE SIZE 2 inch

CLUTCH TORQUE @ 5.5 BAR/80 PSI 29000 Nm 256500 Lb-in
BRAKE TORQUE 22500 Nm 199000 Lb-in

0-420-148-90-330

Rev.	Date	Description	By (I.D.)	Checked (I.D.)	Released (I.D.)	Drawn (I.D.)	Material	Part No.	Quantity	Unit	Location	Notes

Notes:
For shaft to hub air seal information, see appropriate drawing. Other sealing arrangements are possible. Contact Ortech for details.
Tolerances are per ISO R. 286
Keyways are normally 90 degrees from porting.
Use loctite #262 or #242 on strap fasteners.

Rev.	Date	Description	By (I.D.)	Checked (I.D.)	Released (I.D.)	Drawn (I.D.)	Material	Part No.	Quantity	Unit	Location	Notes

THIS DRAWING IS THE PROPERTY OF ORTECH PNEUMATIC AND IS NOT TO BE REPRODUCED OR COPIED IN ANY MANNER WITHOUT THE WRITTEN PERMISSION OF ORTECH PNEUMATIC. THE INFORMATION CONTAINED HEREIN IS CONFIDENTIAL AND IS TO BE KEPT AS SUCH.

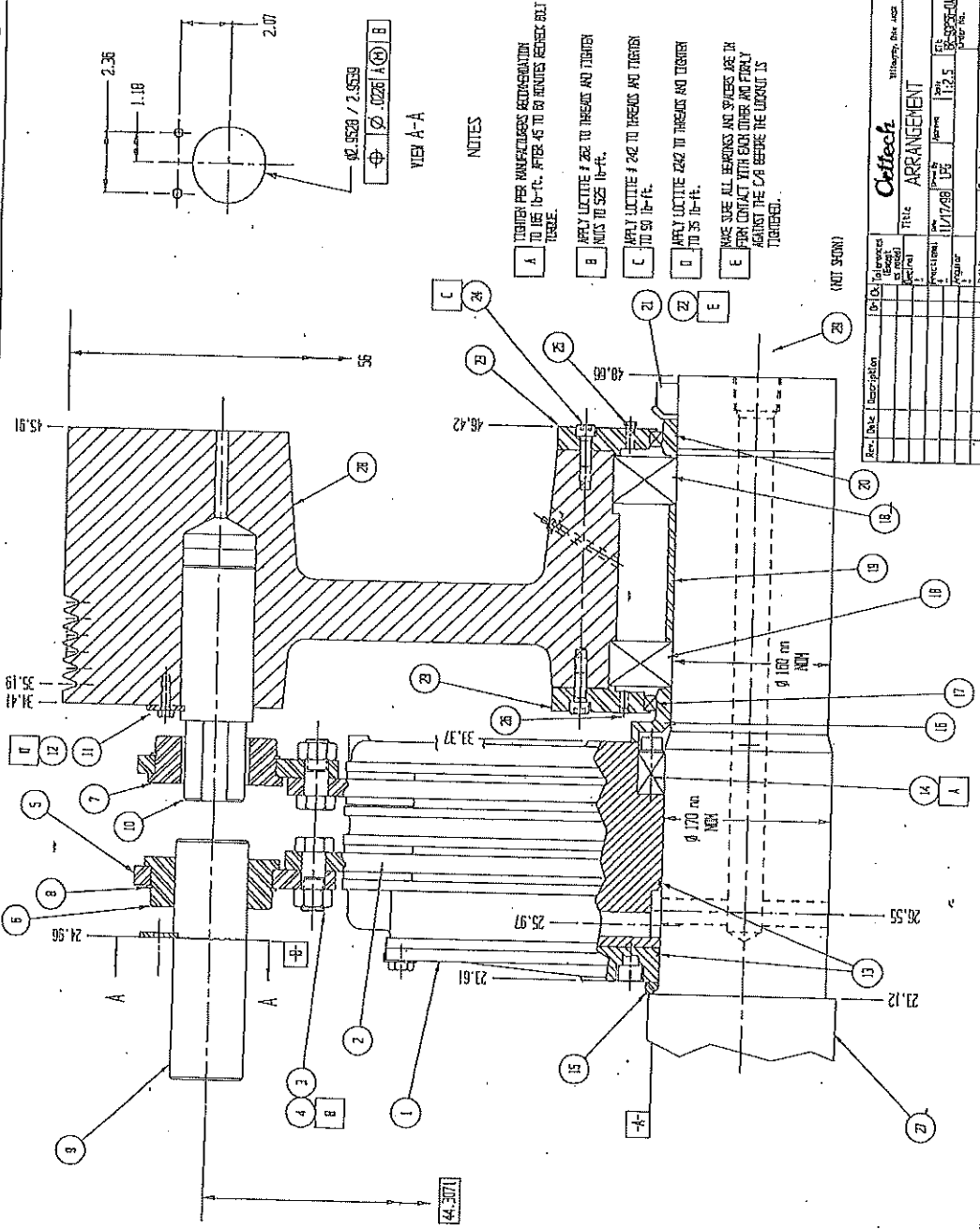
THE BRADBURY CO., INC. MANUFACTURED IN U.S.A.	DATE 11-19-98	REV. M.L.D.
200 TON PRESS	APPROVED BY	DRAWING NO. 12580

CUSTOMER: **GRAIN SYSTEMS**
V.O. 34730

Ortech
Wilmington, Ohio 44094
ORTLINGHAUS PNEUMATIC
COMBINED C/S, Size 90

Short Straps Clutch
Short Straps Brake

53 B 800A 903



- NOTES**
- A TORQUE PER MANUFACTURERS RECOMMENDATION TO USE 16-18. AFTER 16 TO 20 MINUTES REDUCE BOLT TORQUE.
 - B APPLY LUBRICATE # 262 TO THREADS AND TORQUE NUTS TO 525 16-ft.
 - C APPLY LUBRICATE # 262 TO THREADS AND TORQUE TO 50 16-ft.
 - D APPLY LUBRICATE # 262 TO THREADS AND TORQUE TO 35 16-ft.
 - E MAKE SURE ALL BEARINGS AND SPACERS ARE IN FIRM CONTACT WITH EACH OTHER AND FIRMLY AGAINST THE COIL BEFORE THE LOCKWASHER IS TIGHTENED.

Rev. No.	Description	By	Date
1			
2			
3			
4			
5			
6			
7			
8			
9			
10			
11			
12			
13			
14			
15			
16			
17			
18			
19			
20			

Order No.	64C 612499
Customer	THE BRADBURY CO., INC.
Part No.	612499
Quantity	1
Material	SAE 5140
Finish	11.2.5
Heat Treat	11.2.5
Inspection	11.2.5
Drawing No.	64C 612499
Scale	1/16" = 1"
Material	SAE 5140
Heat Treat	11.2.5
Inspection	11.2.5

DATE	11-19-98
SCALE	1/16" = 1"
PRINTED BY	WLD
SHEET	02
REVISING	
CHANGE	
BY	
DATE	

THIS DRAWING IS THE PROPERTY OF THE BRADBURY COMPANY, INC. IT IS TO BE KEPT IN CONFIDENTIALITY AND NOT TO BE COPIED OR DISCLOSED TO ANY OTHER PARTY WITHOUT THE WRITTEN PERMISSION OF THE BRADBURY COMPANY. RETURNED TO THE BRADBURY COMPANY.

CUSTOMER: **GRAIN SYSTEMS** V.O. **34730**

TOLERANCES
 DIMENSIONS ± .005
 ANGULAR ± .5°
 HOLE DIA. ± .005
 SHAFT DIA. ± .005
 CHAMFER ± .005
 RADIUS ± .005