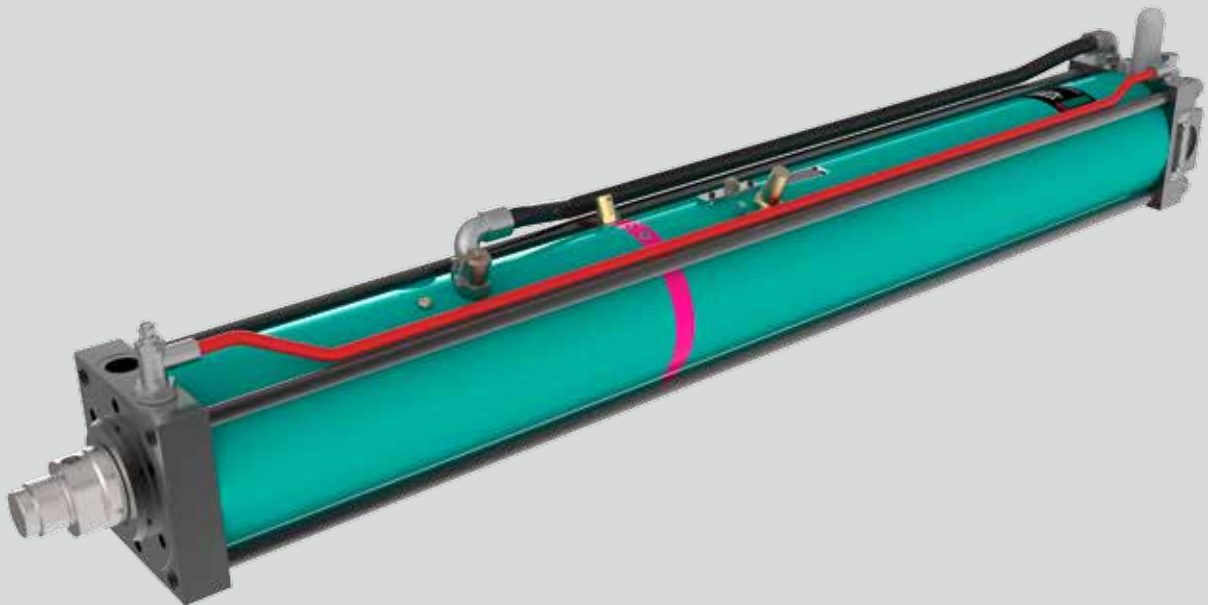


TOX®-Powerpackage line-Q Type Q-S and Q-K

Data sheet 10.50
2019/10

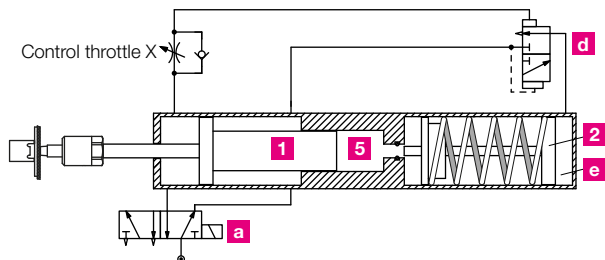


TOX[®]-Powerpackage line-Q

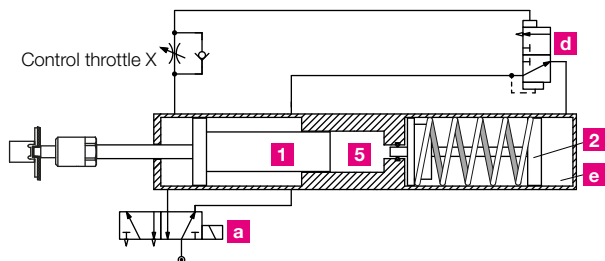
Advantages

- Standard sizes always available
- Short delivery times
- Economical
- Minimum air consumption
- Medium maintenance interval

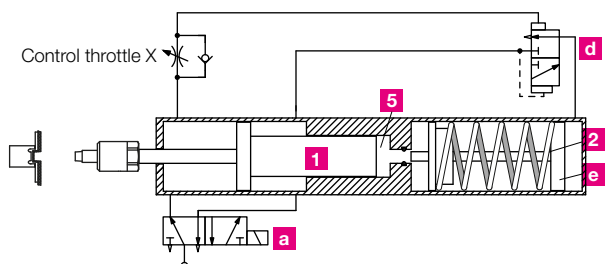
Functioning of the TOX[®]-Powerpackage



Fast approach – the main control valve **a** is switched. The working piston **1** extends, initially with a fast approach stroke, until it meets resistance at any point. It stops and the integrated power stroke valve **d** is shifted. Air flows into chamber **e**.



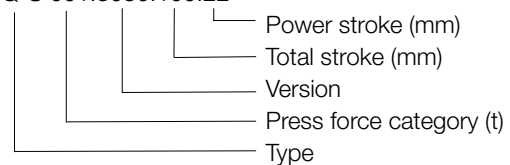
Power stroke – the intensifier piston **2** closes the high pressure chamber **5** and compresses the oil in the working area up to 400 bar. This oil pressure applies pressure to the back of the working piston **1** and triggers the power stroke.



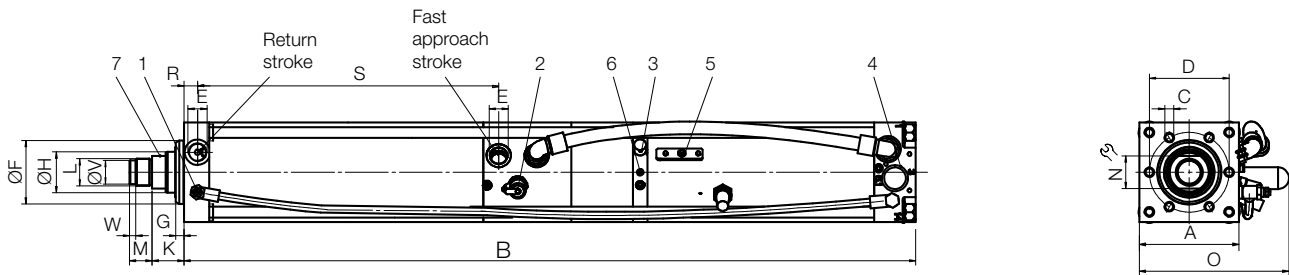
Return stroke – after the changeover of the main control valve **a** the power stroke valve **d** automatically vents the chamber **e**. The intensifier piston **2** and the working piston **1** return to their initial position one after the other.

Example for ordering:

Q-S 001.3030.100.22



TOX®-Powerpackage line-Q, type Q-S



| Type | Total stroke | Incl. Power stroke | at 6 bar compressed air | | | Weight kg |
|-----------------------|--------------|--------------------|-------------------------|-------------------------|----------------------|-----------|
| | | | Max. Press force kN | Fast approach force daN | Retracting force daN | |
| Q-S 001.030.050.21*** | 50 | 21 | 11.6 | 140 | 145 | 12 |
| Q-S 001.030.100.22*** | 100 | 22 | 11.6 | 140 | 145 | 12 |
| Q-S 002.030.050.12 | 50 | 12 | 16.5 | 140 | 145 | 12 |
| Q-S 002.030.100.12 | 100 | 12 | 16.5 | 140 | 145 | 12 |
| Q-S 004.030.050.12 | 50 | 12 | 39.9 | 170 | 190 | 20 |
| Q-S 004.030.100.12 | 100 | 12 | 39.9 | 170 | 190 | 20 |
| Q-S 008.030.050.11 | 50 | 11 | 76.4 | 320 | 325 | 36 |
| Q-S 008.030.100.12 | 100 | 12 | 76.4 | 320 | 325 | 36 |
| Q-S 015.030.050.12 | 50 | 12 | 130.4 | 450 | 535 | 59 |
| Q-S 015.030.100.12 | 100 | 12 | 130.4 | 450 | 535 | 59 |
| Q-S 030.030.100.12 | 100 | 12 | 283.9 | 660 | 915 | 117 |

Dimensions in mm

| Type | A | B | C | D | E | F ₁₇ | G | H | K | L | M | N | O | R | S | V _{g6} | W | *IV |
|-----------------------|-----|------|----------|-----|------|-----------------|----|----|------|---------|----|----|-------|------|-------|-----------------|---|-----|
| Q-S 001.030.050.21*** | 70 | 638 | 6xM8x12 | 54 | G1/4 | 40 | 9 | 20 | 26.0 | M16x1.5 | 15 | 17 | 104 | 13.0 | 116.0 | - | - | ■ |
| Q-S 001.030.100.22*** | 70 | 738 | 6xM8x12 | 54 | G1/4 | 40 | 9 | 20 | 26.0 | M16x1.5 | 15 | 17 | 104 | 13.0 | 166.0 | - | - | ■ |
| Q-S 002.030.050.12 | 70 | 638 | 6xM8x12 | 54 | G1/4 | 40 | 9 | 20 | 26.0 | M16x1.5 | 15 | 17 | 104 | 13.0 | 116.0 | - | - | ■ |
| Q-S 002.030.100.12 | 70 | 738 | 6xM8x12 | 54 | G1/4 | 40 | 9 | 20 | 26.0 | M16x1.5 | 15 | 17 | 104 | 13.0 | 166.0 | - | - | ■ |
| Q-S 004.030.050.12 | 85 | 721 | 6xM8x15 | 64 | G3/8 | 50 | 10 | 30 | 28.5 | M22x2 | 20 | 24 | 124 | 14.0 | 125.0 | 18 | 7 | ■ |
| Q-S 004.030.100.12 | 85 | 821 | 6xM8x15 | 64 | G3/8 | 50 | 10 | 30 | 28.5 | M22x2 | 20 | 24 | 124 | 14.0 | 175.0 | 18 | 7 | ■ |
| Q-S 008.030.050.11 | 110 | 841 | 6xM10x16 | 88 | G1/2 | 70 | 9 | 45 | 35.0 | M30x2 | 25 | 36 | 165 | 15.0 | 133.0 | 26 | 7 | ■ |
| Q-S 008.030.100.12 | 110 | 941 | 6xM10x16 | 88 | G1/2 | 70 | 9 | 45 | 35.0 | M30x2 | 25 | 36 | 165 | 15.0 | 183.0 | 26 | 7 | ■ |
| Q-S 015.030.050.12 | 135 | 878 | 6xM16x25 | 100 | G1/2 | 75 | 15 | 50 | 36.0 | M30x2 | 25 | 41 | 175 | 17.5 | 134.5 | 26 | 7 | ■ |
| Q-S 015.030.100.12 | 135 | 978 | 6xM16x25 | 100 | G1/2 | 75 | 15 | 50 | 36.0 | M30x2 | 25 | 41 | 175 | 17.5 | 184.5 | 26 | 7 | ■ |
| Q-S 030.030.100.12 | 170 | 1207 | 6xM20x30 | 132 | G3/4 | 100 | 17 | 56 | 47.0 | M39x2 | 35 | 50 | 232** | 20.0 | 236.0 | - | - | - |

*IV: integrated sequence valve

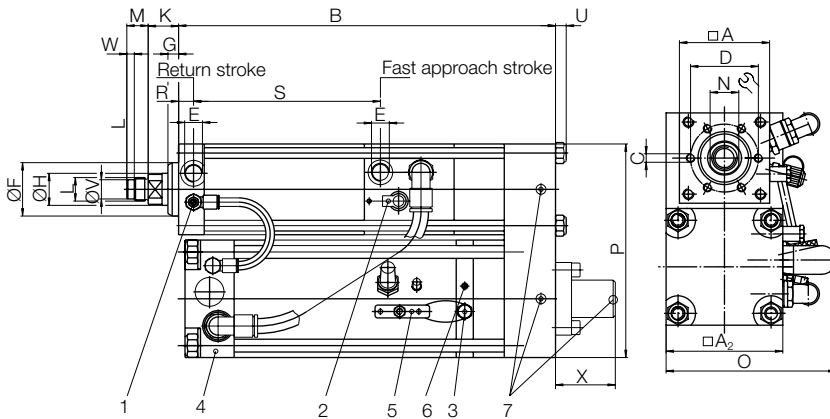
**Series with external sequence valve approach/power stroke

Dimensions in mm

*****Note for devices of type 001:**

To assemble accessories (see data sheets 10.10 TOX®-Powerpackage Accessories / 110.00 Sensors) please observe the TOX®-Powerpackage dimensions and use compatible accessories of type 002.

TOX®-Powerpackage line-Q, type Q-K



- 1 Control throttle X
- 2 High pressure connection
- 3 Oil filling nipple
- 4 Sequence valve approach/power stroke
- 5 Bleed plate
- 6 Oil level indicator
- 7 Bleed screw

| Type | Total stroke | Incl. Power stroke | at 6 bar compressed air | | | Weight kg |
|-----------------------|--------------|--------------------|-------------------------|-------------------------|----------------------|-----------|
| | | | Max. Press force kN | Fast approach force daN | Retracting force daN | |
| Q-K 001.030.100.24*** | 100 | 24 | 11.8 | 140 | 145 | 20 |
| Q-K 001.030.200.52*** | 200 | 52 | 11.8 | 140 | 145 | 27 |
| Q-K 002.030.100.15 | 100 | 15 | 16.3 | 140 | 145 | 20 |
| Q-K 002.030.200.34 | 200 | 34 | 16.3 | 140 | 145 | 27 |
| Q-K 004.030.100.05 | 100 | 05 | 48.6 | 170 | 190 | 33 |
| Q-K 004.030.200.13 | 200 | 13 | 48.6 | 170 | 190 | 43 |
| Q-K 008.030.100.08 | 100 | 08 | 67.4 | 320 | 325 | 62 |
| Q-K 008.030.200.18 | 200 | 18 | 67.4 | 320 | 325 | 77 |
| Q-K 015.030.200.12 | 200 | 12 | 140.4 | 450 | 535 | 134 |

Dimensions in mm

| Type | A | A ₂ | B | C | D | E | F ₁₇ | G | H | K | L | M | N | O | P | R | S | U | V ₉₆ | W | X | *IV |
|-----------------------|-----|----------------|-----|----------|-----|------|-----------------|----|----|------|---------|----|----|-------|-----|------|-------|----|-----------------|---|-------|-----|
| Q-K 001.030.100.24*** | 70 | 85 | 371 | 6xM8x12 | 54 | G1/4 | 40 | 9 | 20 | 26.0 | M16x1.5 | 15 | 17 | 117 | 160 | 13.0 | 166.0 | 8 | - | - | 98.5 | ■ |
| Q-K 001.030.200.52*** | 70 | 85 | 571 | 6xM8x12 | 54 | G1/4 | 40 | 9 | 20 | 26.0 | M16x1.5 | 15 | 17 | 117 | 160 | 13.0 | 266.0 | 8 | - | - | 244.5 | ■ |
| Q-K 002.030.100.15 | 70 | 85 | 371 | 6xM8x12 | 54 | G1/4 | 40 | 9 | 20 | 26.0 | M16x1.5 | 15 | 17 | 117 | 160 | 13.0 | 166.0 | 8 | - | - | 98.5 | ■ |
| Q-K 002.030.200.34 | 70 | 85 | 571 | 6xM8x12 | 54 | G1/4 | 40 | 9 | 20 | 26.0 | M16x1.5 | 15 | 17 | 117 | 160 | 13.0 | 266.0 | 8 | - | - | 244.5 | ■ |
| Q-K 004.030.100.05 | 85 | 110 | 397 | 6xM8x15 | 64 | G3/8 | 50 | 10 | 30 | 28.5 | M22x2 | 20 | 24 | 165 | 200 | 14.0 | 175.0 | 10 | 18 | 7 | 86.5 | ■ |
| Q-K 004.030.200.13 | 85 | 110 | 597 | 6xM8x15 | 64 | G3/8 | 50 | 10 | 30 | 28.5 | M22x2 | 20 | 24 | 165 | 200 | 14.0 | 275.0 | 10 | 18 | 7 | 204.5 | ■ |
| Q-K 008.030.100.08 | 110 | 135 | 426 | 6xM10x16 | 88 | G1/2 | 70 | 9 | 45 | 35.0 | M30x2 | 25 | 36 | 177 | 250 | 15.0 | 183.0 | 12 | 26 | 7 | 93.5 | ■ |
| Q-K 008.030.200.18 | 110 | 135 | 626 | 6xM10x16 | 88 | G1/2 | 70 | 9 | 45 | 35.0 | M30x2 | 25 | 36 | 177 | 250 | 15.0 | 283.0 | 12 | 26 | 7 | 229.5 | ■ |
| Q-K 015.030.200.12 | 135 | 170 | 650 | 6xM16x25 | 100 | G1/2 | 75 | 15 | 50 | 36.0 | M30x2 | 25 | 41 | 232** | 315 | 17.5 | 284.5 | 16 | 26 | 7 | 185.5 | ■ |

*IV: integrated sequence valve

**Series with external sequence valve approach/power stroke

Dimensions in mm

***Note for devices of type 001:

To assemble accessories (see data sheets 10.10 TOX®-Powerpackage Accessories/ 110.00 Sensors) please observe the TOX®-Powerpackage dimensions and use compatible accessories of type 002.

How to order:

Q-S 8.30.100.12

