

# S6R DC Switch - disconnecter base mounting 1P - 2P

Size 1

A 160|200|250|315|400

1500Vdc

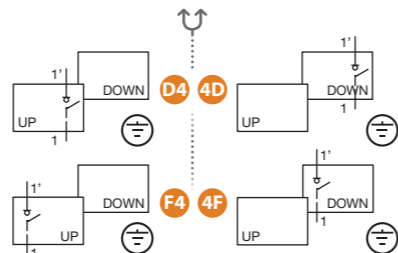
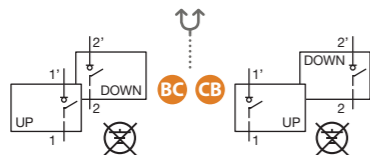


CODE-2P

160 A	S6R0160_S0
200 A	S6R0200_S0
250 A	S6R0250_S0
315 A	S6R0315_S0
400 A	S6R0400_D0

CODE-1P

160 A	S6R0160_S0
200 A	S6R0200_S0
250 A	S6R0250_S0
315 A	S6R0315_S0
400 A	S6R0400_D0



## Accessories



Direct handle

CODE DS-SI11



Auxiliary contacts

1NO+1NC CODE D5LAU01  
2NO+2NC CODE D5LAU02

Ie = 16 A (resistive loads)  
4 A (inductive loads) at 250 Vac.



External handle included shaft \*(e1)

IP65  
CODE DS-SA11

Shafts

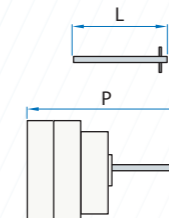
Standard shaft included \*(e1)

L (mm)	P (mm)
227	179...398,5

Shaft extensions

Type 1		
L (mm)	P (mm)	CODE
375	179...546,5	DS-EP14

Type 2		
L (mm)	P (mm)	CODE
536	179...707,5	DS-EP15



## Technical information



According to IEC 60947-1  
IEC 60947-3

		160	200	250	315	400
Rated thermal current I <sub>th</sub> in ambient at 40°C up to 80°C	A	160	200	250	315	400
Rated insulation voltage (DC)	Ui	V	1500	1500	1500	1500
Rated impulse withstand voltage	U <sub>imp</sub>	kV	12	12	12	12
Rated operational current *(1) DC21B	I <sub>e</sub>	1500Vdc	A			

\*(1) Other voltages and / or utilization categories. Please consult  
\*(2) Without limiting protective device (short-circuit maintained 50... 100 ms.)

### Short - circuit behaviour

Rated short-circuit making capacity *(2) I <sub>cm</sub>	kA (peak)	10
Rated short-time withstand current (1sec) I <sub>cw</sub>	kA rms	10

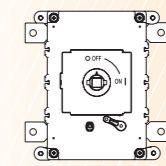
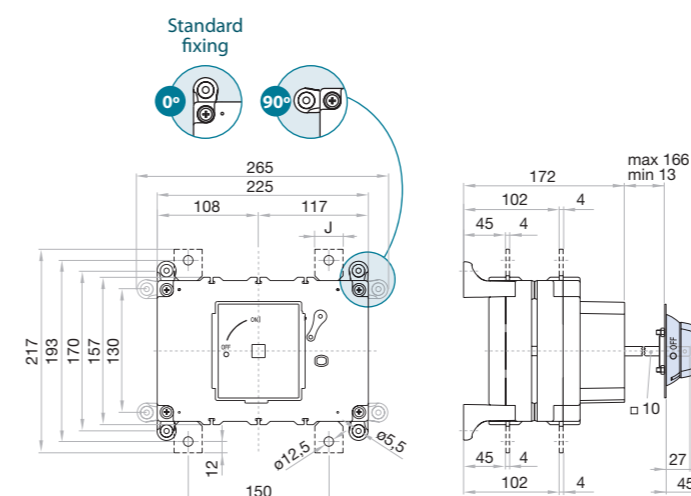
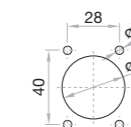
### Mechanical features

Number of mechanical operations (according to the standards, for other values please consult)	Cycles	8000
---	--------	------

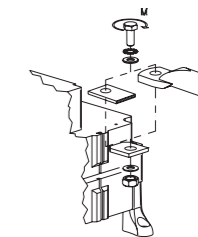
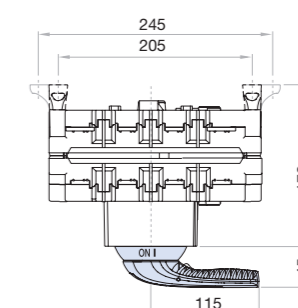
**DO NOT USE IN GROUNDED INSTALLATIONS**

## Dimensions (mm)

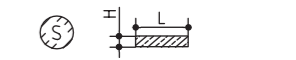
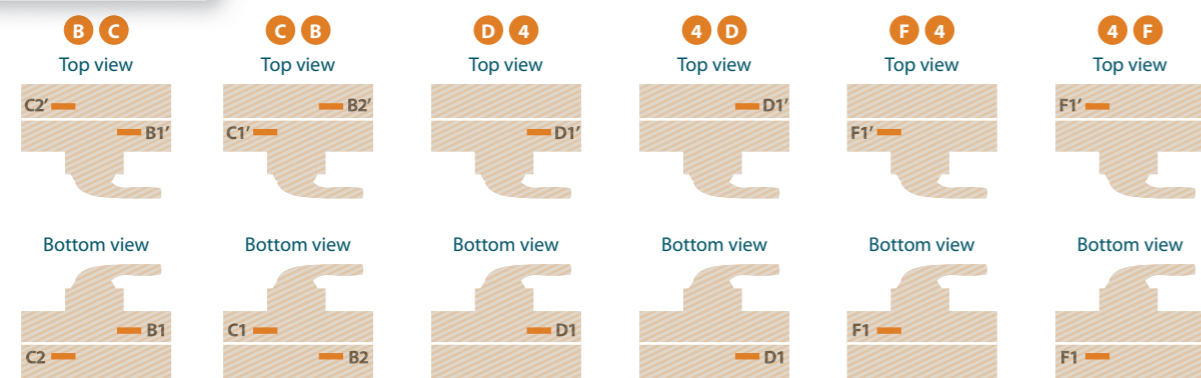
Door drilling for external handle



For rotated mounting there are **S6R** references with front plate rotated (supply under request).



## Terminals location



	J	S max (Cu) mm <sup>2</sup>	H max (Cu) mm	L max (Cu) mm	T	M <sup>+5%</sup> <sub>-10%</sub> Nxm
160 A	25	160 A	185	8	25	M12 24
200 A	25	200 A	185	8	25	M12 24
250 A	25	250 A	185	8	25	M12 24
315 A	25	315 A	185	8	25	M12 24
400 A	30	400 A	240	8	30	M12 24

# S6R DC UL Switch - disconnecter for DC current 1P - 2P

**Size 1**  
**A** 250|320|400  
 1500Vdc

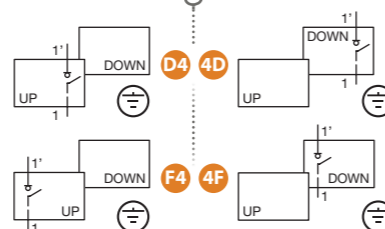
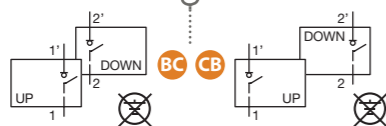


**CODE-2P**

250 A	S6R0250	S00L
320 A	S6R0320	S00L
400 A	S6R0400	D00L

**CODE-1P**

250 A	S6R0250	S00L
320 A	S6R0320	S00L
400 A	S6R0400	D00L



### Accessories

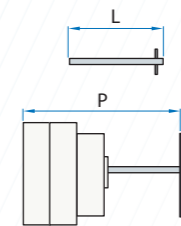
**External handle** included shaft <sup>\*(e1)</sup>  
 IP65  
 CODE DS-SA11

**Auxiliary contacts**  
 1NO+1NC CODE D5LAU01  
 2NO+2NC CODE D5LAU02  
 Ie = 16 A (resistive loads)  
 4 A (inductive loads) at 250 Vac.

**Shafts**  
**Standard shaft** included <sup>\*(e1)</sup>  
 L (mm) P (mm)  
 227 185...336

**Shaft extensions**  
 Type 1  
 L (mm) P (mm) CODE  
 375 185...486 DS-EP14

Type 2  
 L (mm) P (mm) CODE  
 536 185...647 DS-EP15



### Technical information



According to UL98 B

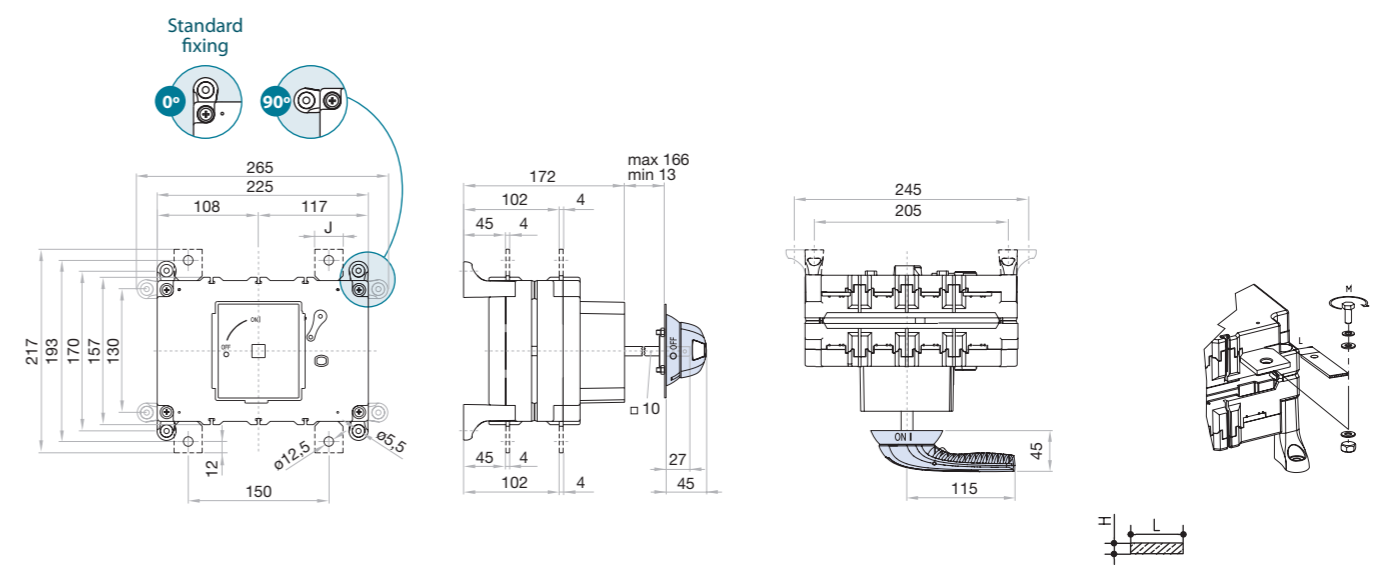
LISTED E333311	250 320 400		
	Rated thermal current I <sub>th</sub> -20°C to 50°C	A	250
Rated operational current I <sub>e</sub> 1500Vdc	A	250	320 400
Rated short-time withstand current (0,05 sec) I <sub>cw</sub>	kA	10	10 10
Maximum weight	Consult according to code		
Wiring capacity			
Minimum busbar connection range	mm <sup>2</sup>	2x 4x30	2x 4x32 2x 4x32

**DO NOT USE IN GROUNDED INSTALLATIONS**

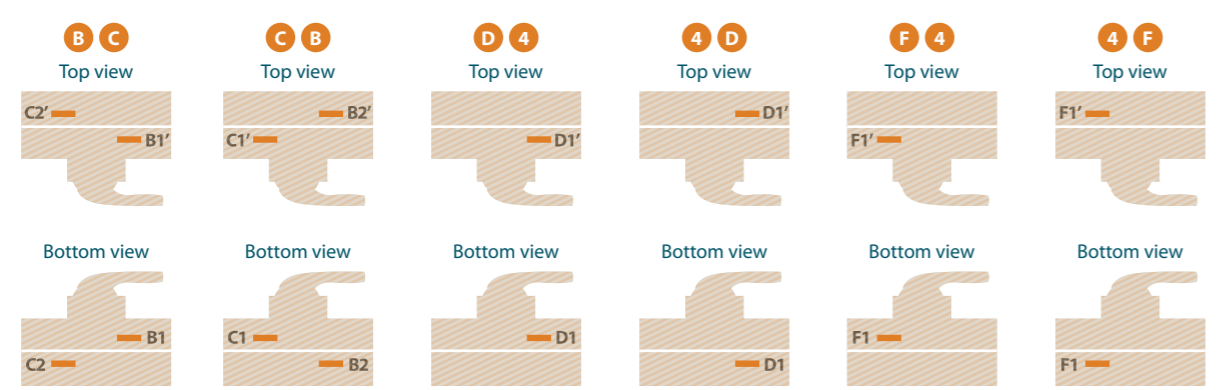
Conforms to UL98B. Minus -20 to 50°C. PV disconnect switch. Location Category B  
 Suitable for use in PV Systems in accordance with Article 690 of the NEC  
 Patent USA  
 N.º 9,899,159 B2



### Dimensions (mm)



### Terminals location



J	H max (Cu)	L max (Cu)	T	M	
					mm lb.inch
250 A	4	5/32	30	1-3/16	M12 24 212
320 A	4	5/32	32	1-1/4	M12 24 212
400 A	4	5/32	32	1-1/4	M12 24 212