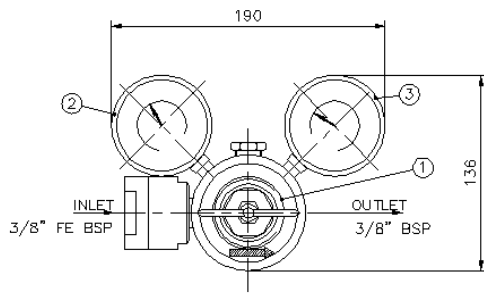


# ISOMATIC

## Datasheet for R1200HBQ/HCQ/HEQ/HFQ



Different inlet and outlet connections on request



Pos	Stk	Tekst	Tegn. nr.
1	1	R1200Q Inlet 370 bar Outlet 1-15 bar	
2	1	MANOMETER 0-15 BAR	
3	1	MANOMETER 0-400 BAR	
4			

Model	P.E. I.P. (bar)	P.U. O.P. (bar)	Flow (Nm <sup>3</sup> /H)	Gauges	
				In	Out
R1200HBQ	370	1.5 - 15	370	0 - 400	0 - 25
R1200HCQ	370	3 - 30	550	0 - 400	0 - 63
R1200HDQ	370	5 - 50	650	0 - 400	0 - 100
R1200HEQ	370	40 - 130	700	0 - 400	0 - 300
R1200HFQ	370	20 - 200	700	0 - 400	0 - 300

### For manifold and cylinder use:

Body	: Brass / Stainless steel 316
Moving parts, springs and bolts	: Brass / Stainless steel 316
Gaskets	: NBR, Teflon, Nylon
Pressure range	: 0-370 bar
Temperature arrange ambient	: 20°C - +80°C
Media	: Inert gas
Thread	: 3/8" BSPT Femal in and outlet

### OPTIONAL EQUIPMENT:

Gauges	: Ø63
Fittings and manifolds	: All fittings and hoses and manifolds available for multi regulator IG-55 systems
For ordering regulators in SS 316	: Order R31200XXX

\*) Mounted with relief valve and balance system