

Application given data

N.A.

Designation: R V 50 UO3A - 20
Mounting position B6, $n_1 = 1400$ [min⁻¹]

Standard product : Yes

Accessories and special designs

Reducer/Gearmotor specifications

| | | |
|--------------------------------------|----------------------|------|
| Transmission ratio i | | 20 |
| Output speed n_2 | [min ⁻¹] | 70,0 |
| Input speed n_1 | [min ⁻¹] | 1400 |
| Input power P_1 | [kW] | N.A. |
| Output torque M_2 | [N m] | N.A. |
| Service factor f_s | | N.A. |
| Efficiency | | 0,80 |
| Mass of gear reducer (without motor) | [kg] | 9 |
| Provisional lubricant quantity | [l] | 0,6 |
| ISO viscosity grade | [cSt] | 320 |

Nominal Data

| | | |
|----------------------------------|-------|------|
| Nominal input power P_{N1} | [kW] | 1,17 |
| Nominal output power P_{N2} | [kW] | 0,94 |
| Nominal output torque M_{N2} | [N m] | 128 |
| Maximum output torque M_{2max} | [N m] | 223 |

Verifications

| | |
|--|------|
| <i>Safety factor on M_{2peak}</i> | N.A. |
| <i>Thermal power verification</i> | N.A. |
| <i>External loads verificaton</i> | N.A. |

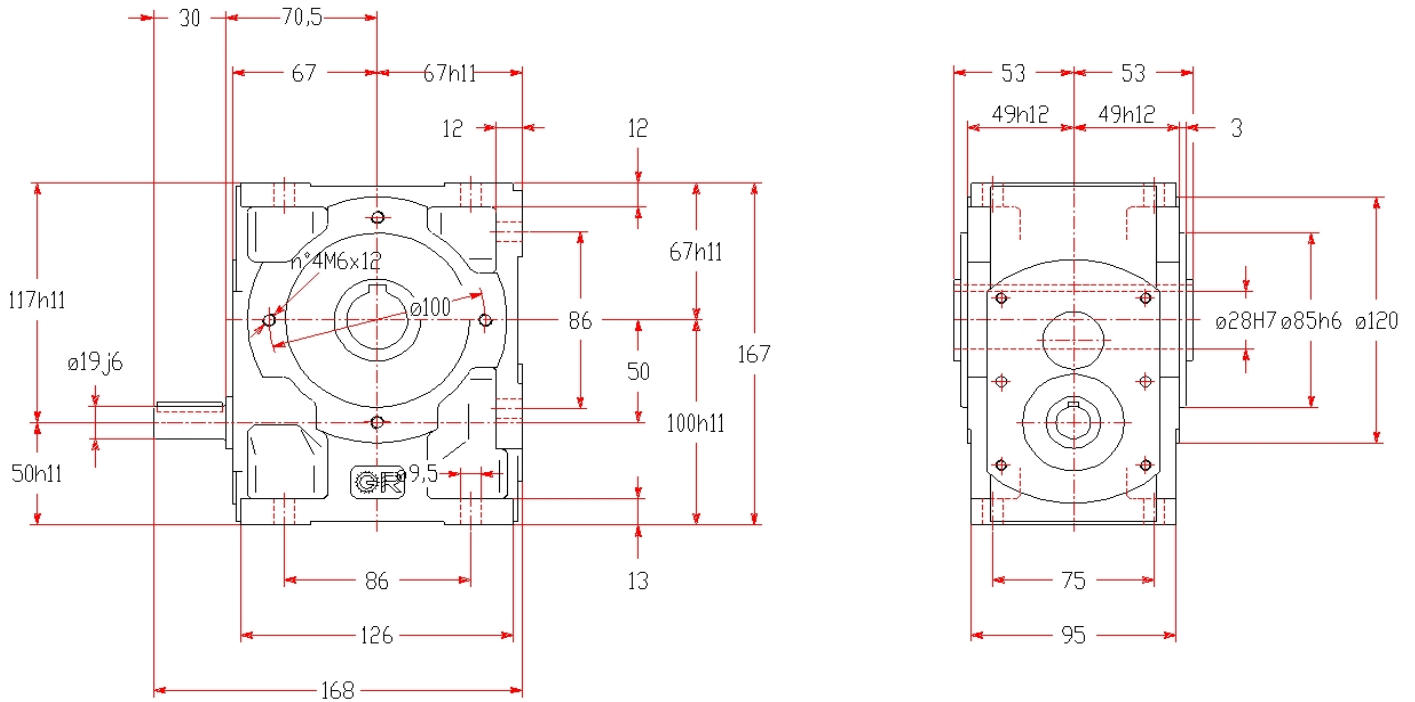
Top view with M.P. B3



DE-19-000248/00 pos. 1

Worm Gear reducer - catalogue A

Main Dimensions [mm] (only for standard gearbox, in case of non-standard design see the drawing on the next page)



Informations and warnings:

Worm gear pair Z2/Z1 = 20/1; Axial module = 3,5; Helix angle = 7°46';

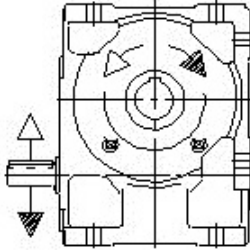
Static efficiency = 0,5; Uncertain static reversibility; Dynamic reversibility, after running-in, with efficiency > 0,6.

Fastening nuts: M8 UNI 5588. With screw UNI 5737, see pag. 81 Cat. A04 rev.11-06/2

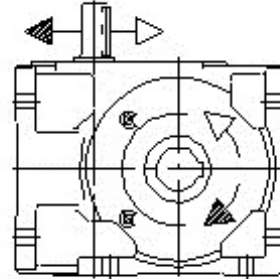
DE-19-000248/00 pos. 1

Worm Gear reducer - catalogue A

Design: UO3A






Mounting position: B6



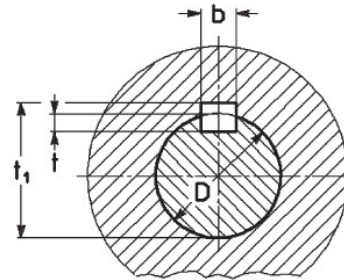
Plugs position

Senza tappo di livello
Fornito completo di olio

Without oil level plug
Supplied filled with oil

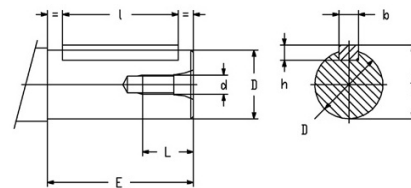
-  = filler plug (in view/not in view)
-  = level plug (in view/not in view)
-  = filler plug (in view/not in view)

Standard hollow low speed shaft



| D | b x h x l | b | t | t ₁ |
|--------|------------|---|---|----------------|
| ø28 H7 | 8 x 7 x 63 | 8 | 4 | 31,2 |

High speed shaft: ø19j6



| D | E | d | b x h x l | L | t ₀ |
|--------|---------|----|-------------|----|----------------|
| ø11 j6 | 23 (20) | M5 | 4x4x18 (12) | 13 | 12,5 |
| ø14 j6 | 30 (25) | M6 | 5x5x25 (16) | 16 | 16 |
| ø16 j6 | 30 | M6 | 5x5x25 | 16 | 18 |
| ø19 j6 | 40 (30) | M6 | 6x6x36 (25) | 16 | 21,5 |