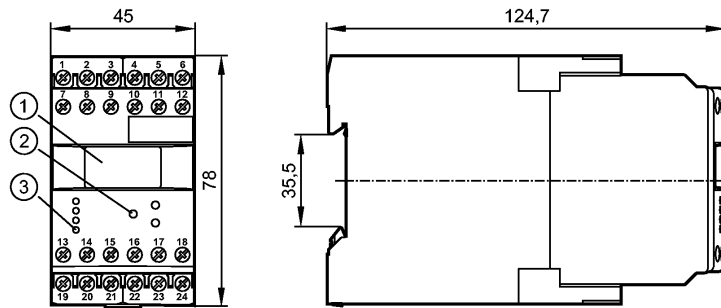


**DR2505**

MONITOR/FD-2 /110-240VAC/DC

Evaluation systems, power supplies



- 1: OLED display
- 2: Programming buttons
- 3: LEDs



**Product characteristics**

MONITOR
FD-2
Housing for DIN rail mounting
2 relay outputs
2 transistor outputs
programmable
Key function

**Application**

Application	pulse evaluation system with $\mu$ processor for direction monitoring with separate direction indication for "right" and "left"
Switching function	2 switching outputs for separate indication of direction; adjustable reset times for standstill monitoring

**Electrical data**

Nominal voltage	[V]	110...240 AC (50...60 Hz) / 27 DC (typ. 24 DC)
Voltage tolerance	[%]	-20...+10
Power consumption	[VA]	5 (3 W)
Sensor supply	[V]	19.6...27.7 DC SELV, $\leq$ 150 mA

**Inputs**

Inputs	<p>pnp/npn; NAMUR (24 V)                      auxiliary supply: typ. 24 V DC / 15 mA; short-circuit protected                      threshold pnp: &gt; 12 V on; &lt; 5 V off                      threshold npn: &gt; 15 V off; &lt; 8 V on                      input frequency (max): 1 kHz (corresponds to min. pulse length / space 0.1 ms)</p>
--------	---

**Outputs**

Relay	
Contact rating	6 A (250 V AC); B300, R300
Transistor	
Transistor outputs	<p>pnp; external supply                      switching voltage/current: 24 V DC / max. 15 mA; short-circuit protected</p>

**Measuring / setting range**

Adjustment range	reset time: 0.0...1000 s
------------------	--------------------------

**Accuracy / deviations**

Measuring error [% of the final value]	< 1
--	-----

**Environment**



## DR2505

MONITOR/FD-2 /110-240VAC/DC

Evaluation systems, power supplies

Ambient temperature	[°C]	-40...60
Storage temperature	[°C]	-40...85
Max. relative air humidity	[%]	80 (31°C), linearly decreasing to 50 % (40 °C)
Protection housing / terminals		IP 50 / IP 20

### Tests / approvals

EMC	EN 61010	2011
	EMC 89/336/EEC	
	EN 61000-6-2	2005
	EN 61000-6-4	2007

### Mechanical data

Housing materials		plastics
Weight	[kg]	0.363

### Displays / operating elements

Input pulses	LED	yellow
Output status indication	LED	green (lights when the relay is energised / the transistor is closed)
Display		OLED display 128 x 64 dots luminous

### Electrical connection

Connection		dual-chamber terminals 2 x 2.5 mm <sup>2</sup> (2 x AWG 14)
------------	--	---

### Wiring

- 1: DC Supply voltage (L-)
- 2: DC Supply voltage (L+)
- 3: supply transistor outputs (L+)
- 4: sensor signal 1 pnp
- 5: DC Sensor supply (L+)
- 6: DC Sensor supply (L-)
- 7: AC Supply voltage (L)
- 8: AC Supply voltage (N)
- 9: n.c.
- 10: sensor signal 1 npn
- 11: sensor signal 2 pnp
- 12: sensor signal 2 npn
- 13: Relay 1 (common)
- 14: Relay 1 (normally open)
- 15: Relay 1 (normally closed)
- 16: transistor output 1 pnp
- 17: Reset 1 pnp
- 18: Reset 2 pnp
- 19: Relay 2 (common)
- 20: Relay 2 (normally open)
- 21: Relay 2 (normally closed)
- 22: n.c.
- 23: n.c.
- 24: transistor output 2 pnp

### Remarks

Remarks		overvoltage category II; degree of soiling 2
Pack quantity	[piece]	1