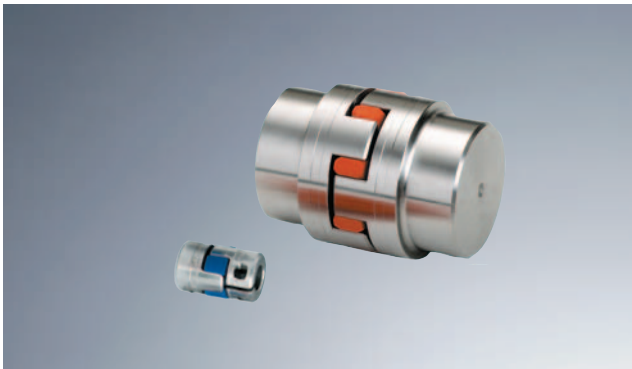

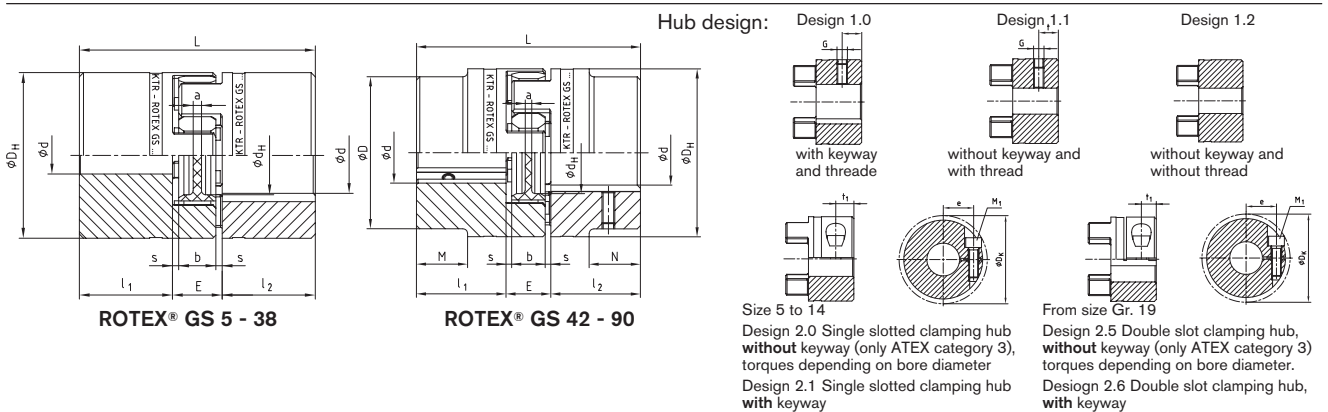


### Standard types



- Backlash-free shaft connection under prestress
- Small dimensions - low flywheel mass
- Maintenance-free, easy to check visually
- Different elastomer hardness of spiders (page 1460)
- Finish bore according to ISO fit H7 (except for clamping hub), feather key optionally available from Ø 6 mm according to DIN 6885 sheet 1 – JS9.
-  Approved according to EC Standard 94/9/EC (without feather key according to category 3)



ROTEX® GS Standard types For size 5 to 38 hub material aluminium/for size 42 to 90 hub material steel																					
Size	Spider torque $T_{KN}$ [Nm] for 95/98Sh-A <sup>1)</sup>	Maximal finish bore Ød for hub design			Dimensions [mm]										Setscrew DIN EN ISO 4029 Hub design 1.0/1.1		Clamping screw DIN EN ISO 4762 (ROTEX® 5 DIN 84) Hub design 2.0/2.1/2.5/2.6				
		1.0-1.2	2.0/2.5	2.1/2.6 <sup>3)</sup>	D	D <sub>H</sub>	d <sub>H</sub>	L	l <sub>1</sub> /l <sub>2</sub>	M:N	E	b	s	a	G	t	M <sub>1</sub>	t <sub>1</sub>	e	D <sub>K</sub>	T <sub>A</sub> [Nm]
5	0,9	6	5	5	-	10	-	15	5	-	5	4	0,5	4,0	M2	2,5	M1,2	2,5	3,5	11,4	- <sup>2)</sup>
7	2,0	7	7	7	-	14	-	22	7	-	8	6	1,0	6,0	M3	3,5	M2	3,5	5,0	16,5	0,37
9	5,0	11	11	11	-	20	7,2	30	10	-	10	8	1,0	1,5	M4	5,0	M2,5	5,0	7,5	23,4	0,76
12	9,0	12	12	12	-	25	8,5	34	11	-	12	10	1,0	3,5	M4	5,0	M3	5,0	9,0	27,5	1,34
14	12,5	16	16	16	-	30	10,5	35	11	-	13	10	1,5	2,0	M4	5,0	M3	5,0	11,5	32,2	1,34
19	17	24	24	24	-	40	18	66	25	-	16	12	2,0	3,0	M5	10	M6	11,0	14,5	46	10,5
24	60	28	28	28	-	55	27	78	30	-	18	14	2,0	3,0	M5	10	M6	10,5	20,0	57,5	10,5
28	160	38	38	38	-	65	30	90	35	-	20	15	2,5	4,0	M8	15	M8	11,5	25,0	73	25
38	325	45	45	45	-	80	38	114	45	-	24	18	3,0	4,0	M8	15	M8	15,5	30,0	83,5	25
42	450	55	50	45	85	95	46	126	50	28	26	20	3,0	4,0	M8	20	M10	18	32,0	93,5	69
48	525	62	55	55	95	105	51	140	56	32	28	21	3,5	4,0	M8	20	M12	21	36,0	105	120
55	685	74	68	68	110	120	60	160	65	37	30	22	4,0	4,5	M10	20	M12	26	42,5	119,5	120
65	1175	80	70	70	115	135	68	185	75	47	35	26	4,5	4,5	M10	20	M12	33	45,0	124	120
75	1920	95	80	80	135	160	80	210	85	53	40	30	5,0	5,0	M10	25	M16	36	51,0	147,5	295
90	3600	110	90	90	160	200	104	245	100	62	45	34	5,5	6,5	M12	30	M20	40	60,0	192	580

<sup>1)</sup> For further spiders/selection see 142/143 <sup>2)</sup> tightening torque  $T_A$  not defined <sup>3)</sup> from Ø65 keyway opposite to the clamping screw <sup>4)</sup> clamping hub single slotted 2 x clamping screw M4 and dimension e=15

Transmittable torques $T_R$ [Nm] of the clamping hub without keyway design 2.0 <sup>1)</sup>															
Size	Ø2	Ø3	Ø4	Ø5	Ø6	Ø7	Ø8	Ø9	Ø10	Ø11	Ø12	Ø14	Ø15	Ø16	
7		0,8		0,9	0,95	1,0	1,1								
9			2,1	2,2	2,3	2,4	2,5	2,6	2,7	2,8					
12			3,6	3,8	4,0	4,1	4,3	4,5	4,7	4,8	5,0				
14				4,7	4,8	5,0	5,1	5,3	5,5	5,6	5,8	6,1	6,3	6,5	

Transmittable torques $T_R$ [Nm] of the clamping without keyway hub design 2.5 <sup>1)</sup>																															
Size	Ø8	Ø10	Ø11	Ø14	Ø15	Ø16	Ø18	Ø19	Ø20	Ø22	Ø24	Ø25	Ø28	Ø30	Ø32	Ø35	Ø38	Ø40	Ø42	Ø45	Ø48	Ø50	Ø55	Ø60	Ø65	Ø70	Ø75	Ø80	Ø90		
19	25	27	27	29	30	31	32	32	34	30 <sup>4)</sup>	32 <sup>4)</sup>																				
24		34	35	36	38	38	39	40	41	42	43	45	46																		
28				80	81	81	84	85	87	89	91	92	97	99	102	105	109														
38					92	94	97	98	99	102	104	105	109	112	113	118	122	123	126	130											
42									232	238	244	246	255	260	266	274	283	288	294	301	309	315									
48												393	405	413	421	434	445	454	462	473	486	494	514								
55															473	486	498	507	514	526	539	547	567	587	608						
65																507	518	526	535	547	559	567	587	608	627	648					
75																					1102	1124	1148	1163	1201	1239	1278	1316	1354	1393	
90																					1944	1980	2016	2040	2100	2160	2220	2280	2340	2400	2520

Order form:	ROTEX®GS 24	98 Sh-A-GS	d20	2.5	-	Ø 24	1.0	-	Ø 20
	Coupling size	Spider hardness	Optional: Bore diameter in spider	Hub design	Finish bore	Hub design	Finish bore		