

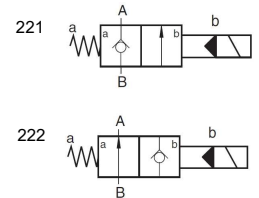
2/2-way poppet valve type SV_221/SVN222 BE08

operating pressure p_{\max}

350 bar

volume flow V_{\max}

30 L/min



Product characteristics

- The leakproof hydraulically pilot operated 2/2-way poppet valve offers a high operational reliability even after long periods under high pressure.
- simple design
- optionally with or without manual override

Table of Contents

Technical data.....	2
Characteristic lines.....	3
Dimensions and connections.....	4
Order information.....	5

Technical data

General

weight	0.4 kg
ambient temperature	-30 to +50 °C
mounting position	arbitrary
type	SV_221 poppet valve, pilot controlled (electrically unlockable check valve) SVN_222 poppet valve, pilot controlled

Hydraulic parameters

Hydraulic fluid: mineral oil according to DIN 51524, other media on request

max. operating pressure	350 bar
hydraulic fluid temperature	-25 to +70 °C
viscosity	10-600 mm ² /s
permissible degree of pollution	max. class 22/19/16 according ISO 4406
filter recommendation	filter retention rate $\beta_{25} > 75$

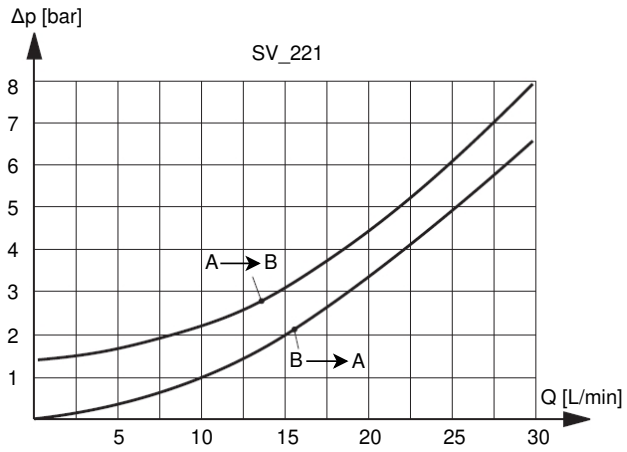
Electrical parameters

actuation	electromagnetic with / without manual override
voltage	AC ± 10 % with socket DC ± 10 %
power consumption	SVN221: 16 W; P_{20} (=power at 20 °C) SVS221/SVN222: 26 W; P_{20}
duty cycle	continuous operation
protection class according DIN 40050	IP65 with socket

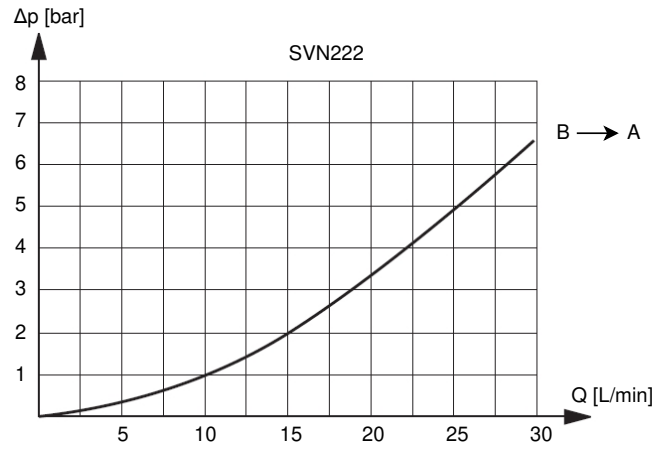
Characteristic lines

measured at +50 °C temperature of hydraulic fluid, viscosity 35 mm²/s, tolerance ±5 %

SV_221

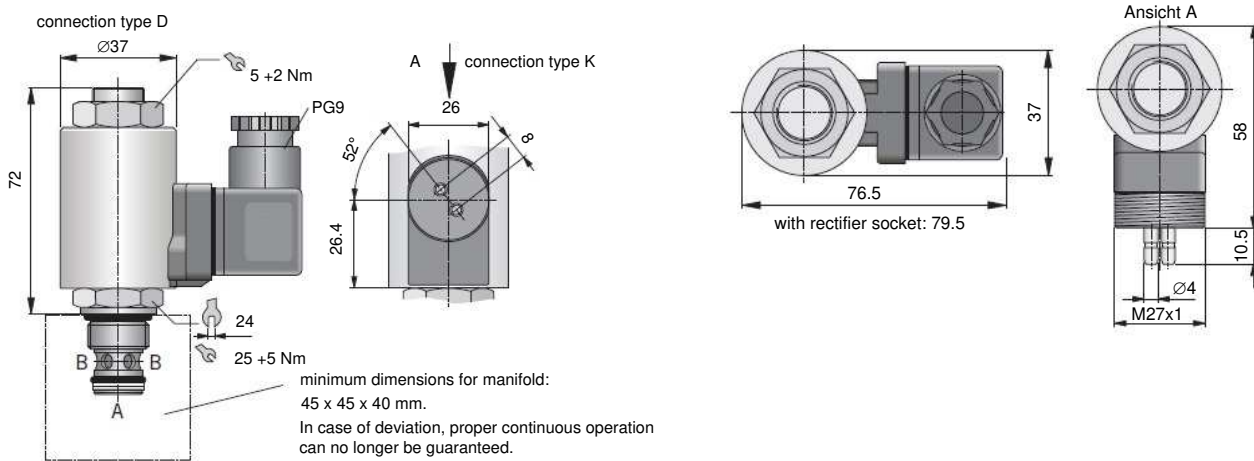


SVN222



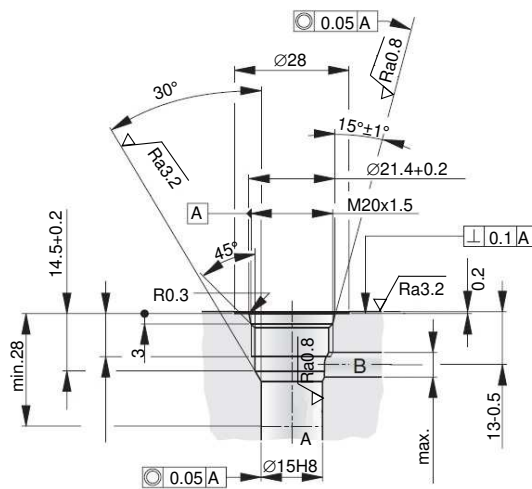
Dimensions and connections

Dimensions are given in mm.



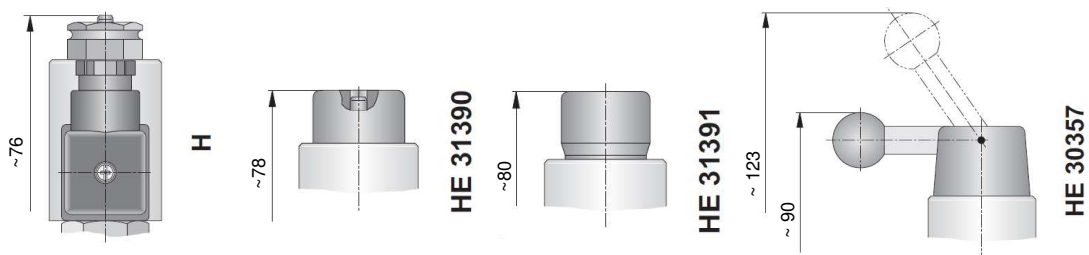
Rectifier socket can be mounted in 4 positions at a 90° angle.
Solenoid can be turned by 360° after loosening the knurled nut.

mounting space



Manual override

SVN222 only



Order information

Type code

SV_ 222 BE08 N D H*

manual override

		actuation types	
—	basic version		
H*	manual override	HE31390**	manual override pin countersunk
		HE31391**	push button
		HE30357**	lever

* SVN222 only

** not included in delivery

connection type

D plug connection according EN 175301-80
K with connection for Kostal plug

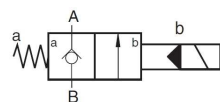
electrical data

N 12 V = (DC)
P 24 V = (DC)
V*** 115 V 50/60 Hz ~ (AC)
W*** 230 V 50/60 Hz ~ (AC) with rectifier socket
*** connection type D only

size

type

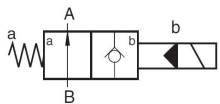
221



SVN221 power consumption 16 W

SVS221 power consumption 26 W

222



power consumption 26 W

design

SV_221

SVN222