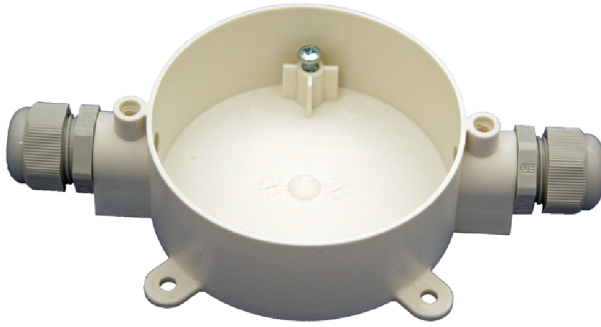


Detector Base

Salwico 2IP55

Part no. 046950



G003843

System: All Salwico fire alarm systems

General Description

The 2IP55 is a base for all Salwico IP55 detector adapters.

Together with the adapters it is possible to install smoke, heat and flame detectors in harsh environment with an ingress protection up to IP55. It can be used for both addressable and conventional fire alarm systems.

Data

| | |
|--------------------|------------------------------------|
| Cable diameter | Ø8-13 mm |
| Ingress protection | IP55 |
| Fire class | V1 |
| Temperature range | -30°C to +100°C |
| Material | Polyamide/glass (PA666, 15% GW) |
| Colour | White |
| Weight | ~100 g |

Dimensions (mm)

