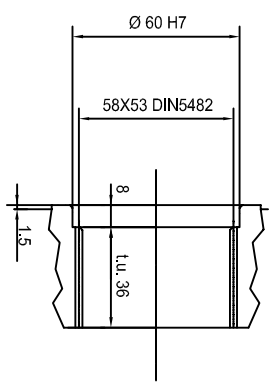


VIEW FROM A - VIEW FROM B

Ø 38 (+0.04/+0.02)
CH 10X8 UNI 6804

OUTPUT SHAFT



TECHNICAL DATA

DESCRIPTION: PGA503 F 67.7 11004

PLANETARY GEARBOX

BRAKE

MOTOR FITTINGS

RATIO I=67.7
 CONT TORQUE 466 daNm
 MAX TORQUE 932 daNm
 INPUT SPEED max2800rpm
 LUBRICANT ISO 3448
 OIL QUANTITY 01

TYPE BRAKING TORQUE Min.
 RELEASE PRESSURE Min.
 MAX PRESSURE
 LUBRICANT
 OIL QUANTITY

DESCRIPTION 11004
 40X36 38-CH.10 4M12
 MOTOR

TYPE PART. N.
 DISPLACEMENT

INPUT SHAFT

- Ⓜ BREATHER PLUG
- Ⓝ FILLING PLUG
- Ⓟ LEVEL PLUG
- Ⓢ DRAIN PLUG
- Ⓣ ELBOW
- Ⓤ EXTENSION

PART. N.	PAINT COLOR	CUSTOMER
WEIGHT *** Kg	MOUNTING POSITION B55	

Customer information field

haimega
mechanics on demand

DATE 01-09-16
SGN.
N.DIS TEMPOR