



G008710

IS optical smoke/heat detector

Salwico NS-AOHS-IS

Part no. N11250

System: * CS3000, CS4000, NSAC-1, Salwico Cargo, Salwico Cruise, Salwico LNG, Salwico Offshore, Salwico Ro/Pax, Salwico Workboat, Salwico Yacht, Salwico Navy, OEM Extinguish

Description

NS-AOHS-IS is an intrinsically safe analogue addressable multi sensor detector for Salwico fire alarm systems.

It has two separate analogue sensor elements. One optical for smoke detection and one heat-sensing element for heat detection.

Alarm condition is indicated on the detector via a red LED. The LED is lit until the alarm has been reset on the control panel.

The address is set with a DIP switch, which is mounted on the backside of the detector.

NS-AOHS-IS is connected to the detector loop via the ISOLATOR-A, part. no. N1790. Up to 20 addressable IS units can be connected to one ISOLATOR-A.

It is not possible to connect any remote LED indicator to NS-AOHS-IS.



CAUTION!

Certified product

No modifications permitted without reference to notified body.

Safety data

Max input voltage (U_i)	28 VDC
Max input current (I_i)	93.3 mA
Max input power (P_i)	0.66 W
Max internal capacitance (C_i)	1 nF
Max internal inductance (L_i)	Negligible
Responsible manufacturer	Consilium Marine & Safety AB, www.consilium.se

Only clean outside of detector by using a damp cloth.

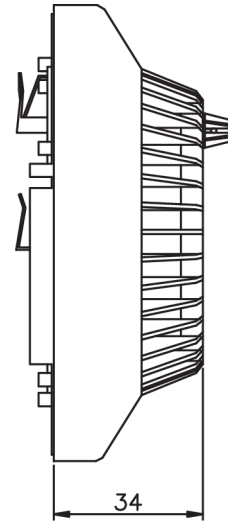
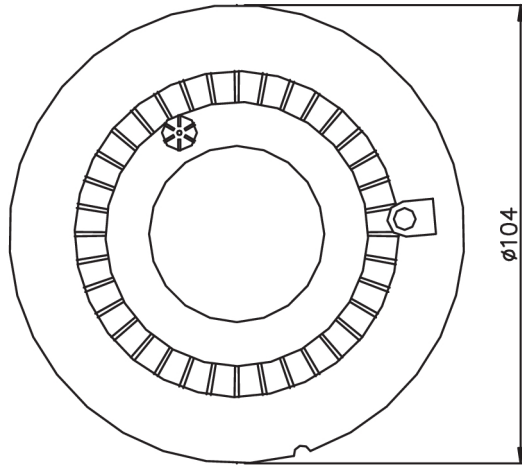
Data

Smoke sensing method	Light scattering type Infra-red
Nominal voltage	24 VDC
Working voltage	15 - 28 VDC
Working current	0.2 mA
Alarm current	2.5 mA
Alarm temperature	84 °C
Temperature range	-25 °C to +70 °C
Ambient humidity	0-95% RH, non-condensing
Ex class	II 1G EEx ia II C T5 Ta: 70 °C
Cert. NEMKO	05ATEX1136X
Certified according to	2531/yy yy = year of production
Colour	White
Weight	~100 g (head only) ~340 g complete with ADAPTER NS-ADAPT-IS2 and base 2IP55

It is important only to use the special base adapter ADAPTER NS-ADAPT-IS2 part. no. N1430 together with a suitable base. For information about suitable bases, see separate document "Base matrix Salwico units".

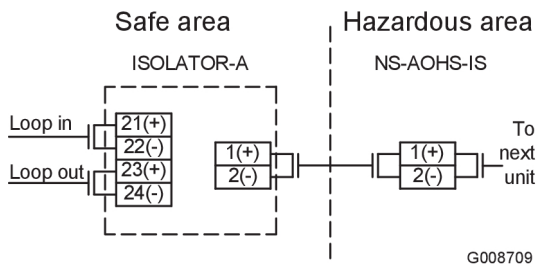
* SPK-2 for NOSE based detectors.

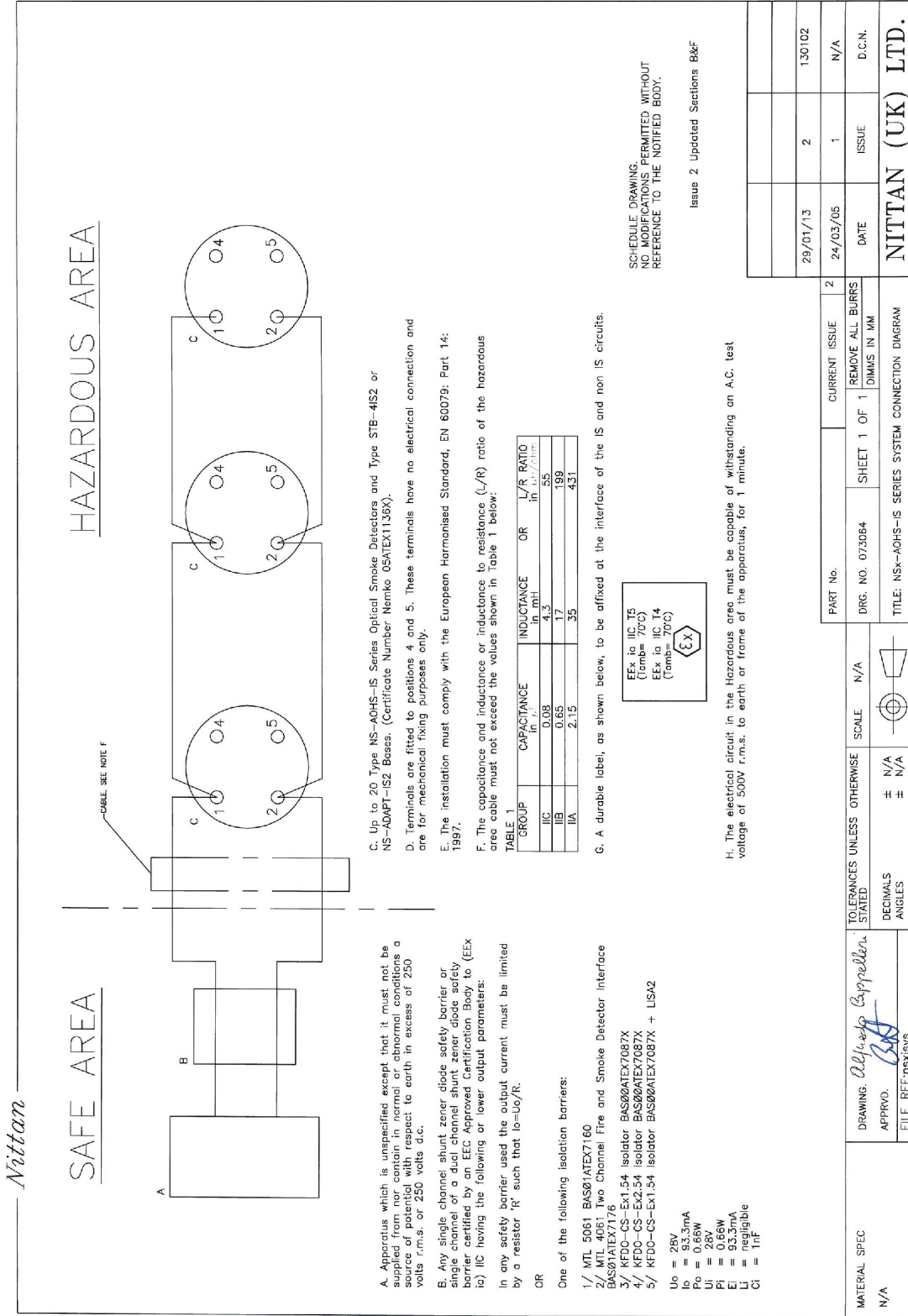
Dimensions (mm)



G008706

Connection



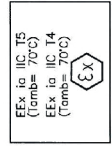


- A. Apparatus which is unspecified except that it must not be supplied from nor contain in normal or abnormal conditions a source of potential with respect to earth in excess of 250 volts r.m.s. or 250 volts etc.
- B. Any single channel shunt zener diode safety barrier or single channel of a dual channel shunt zener diode safety barrier certified by an EEC Approved Certification Body to (EEx ia) IIC in having the following or lower output parameters:
In any safety barrier used the output current must be limited by a resistor R_o such that I_o=U_o/R_o.
- OR
- One of the following isolation barriers:
1/ MTL 5061 BAS01ATEX7160
2/ MTL 4061 Two Channel Fire and Smoke Detector Interface BAS01ATEX7176
3/ KFDO-CS-EX1.54 Isolator BAS00ATEX7087X
4/ KFDO-CS-EX2.54 Isolator BAS00ATEX7087X
5/ KFDO-CS-EX1.54 Isolator BAS00ATEX7087X + LIS42
U_o = 28V
I_o = 93.3mA
P_o = 0.66W
U_i = 28V
P_i = 0.66W
E_i = 93.3mA
C_i = 1nF

- C. Up to 20 Type NS-AOHS-IS Series Optical Smoke Detectors and Type STB-4IS2 or NS-ADAPT-IS2 Bases. (Certificate Number Nemko 05ATEX1136X).
- D. Terminals are fitted to positions 4 and 5. These terminals have no electrical connection and are for mechanical fixing purposes only.
- E. The installation must comply with the European Harmonised Standard, EN 60079; Part 14;
- F. The capacitance and inductance or inductance to resistance (L/R) ratio of the hazardous area cable must not exceed the values shown in Table 1 below:

GROUP	CAPACITANCE in μ F	INDUCTANCE in mH	OR	L/R RATIO in $\frac{\mu H}{\Omega}$
IIC	0.08	4.3		55
IIB	0.65	17		199
IIA	2.15	35		431

G. A durable label, as shown below, to be affixed at the interface of the IS and non IS circuits.



H. The electrical circuit in the Hazardous area must be capable of withstanding an A.C. test voltage of 500V r.m.s. to earth or frame of the apparatus, for 1 minute.

SCHEDULE DRAWING
NO MODIFICATIONS PERMITTED WITHOUT REFERENCE TO THE NOTIFIED BODY.

Issue 2 Updated Sections B&F

MATERIAL SPEC	TOLERANCES UNLESS OTHERWISE STATED		SCALE	N/A	PART No.	CURRENT ISSUE	2
N/A	DRAWING	APPROVD.	FILE REF:	nexisys	DRG. NO.	073064	SHEET 1 OF 1
			DECIMALS	N/A			REMOVE ALL BURRS DIMAS IN MM
			ANGLES	N/A			
					DATE	29/01/13	130102
					DATE	24/03/05	1
					ISSUE		D.C.N.
					NITTAN (UK) LTD.		

G014927